

Annual Management Report of Fund Performance

for the financial year ended August 31, 2020

All figures are reported in Canadian dollars unless otherwise noted.

This annual management report of fund performance contains financial highlights but does not contain the complete annual financial statements of the investment fund. You can get a copy of the annual financial statements at your request, and at no cost, by calling toll-free at 1-888-888-3863, by writing to us at Renaissance Investments, 1500 Robert-Bourassa Boulevard, Suite 800, Montreal, QC, H3A 3S6, or by visiting our website at www.renaissanceinvestments.ca or SEDAR at www.sedar.com.

Unitholders may also contact us using one of these methods to request a copy of the investment fund's interim financial report, proxy voting policies and procedures, proxy voting disclosure record, or quarterly portfolio disclosure.

Management Discussion of Fund Performance

Investment Objective and Strategies

Investment Objective: Axiom Balanced Income Portfolio (the *Portfolio*) seeks to achieve a balance of income and long-term capital growth with a focus on income, by investing primarily in a blend of income and bond mutual funds, along with equity mutual funds (its *Underlying Funds*).

Investment Strategies: The Portfolio has, under normal market conditions, a long-term strategic asset mix of fixed income (45-75%) and equities (25-55%). The Portfolio Advisor may review and adjust the asset mix, in its sole discretion, depending on economic conditions and relative value of income and equity securities. The Portfolio will utilize strategic and tactical asset allocation strategies that will:

- invest up to 100% of the Portfolio's net asset value primarily in units of its Underlying Funds managed by the Manager or one of its affiliates;
- allocate the Portfolio's assets among the Underlying Funds according to the asset mix determined by the Portfolio Advisor and monitor, review, and periodically rebalance or modify the Portfolio's asset mix, change the percentage holdings of any Underlying Fund, and add or remove any Underlying Fund at the Portfolio Advisor's sole discretion.

Risk

The Portfolio is a Canadian fixed income balanced fund that is suitable for medium to long-term investors who can tolerate low investment risk.

For the period ended August 31, 2020, the Portfolio's overall level of risk remained as discussed in the simplified prospectus.

Results of Operations

The Portfolio's portfolio advisor is CIBC Asset Management Inc. (CAMI, the *Manager* or *Portfolio Advisor*). The commentary that follows provides a summary of the results of operations for the period ended August 31, 2020. All dollar figures are expressed in thousands, unless otherwise indicated.

The Portfolio's net asset value decreased by 5% during the period, from \$120,507 as at August 31, 2019 to \$114,079 as at August 31, 2020. Net redemptions of \$11,689 were partially offset by positive investment performance, resulting in an overall decrease in net asset value.

Class A units of the Portfolio posted a return of 5.1% for the period. The Portfolio's primary benchmark, the FTSE Canada Universe Bond Index (the *primary benchmark*), returned 5.8% for the same period. The Portfolio's blended benchmark, as described in the *Annual Compound Returns* section under *Past Performance*, returned 6.7% for the same period. The blended benchmark closely reflects the asset classes the Portfolio invests in, and provides a more useful comparative to the Portfolio's performance. The Portfolio's return is after the deduction of fees and expenses, unlike the primary and blended benchmarks' returns. See the section *Past Performance* for the returns of other classes of units offered by the Portfolio.

The Portfolio has a target asset allocation of 60% Canadian fixed income securities, 12.2% Canadian income-generating investments, 10% U.S. equities, 8.8% Canadian equities, 6% international equities and 3% emerging markets equities.

Over the period, the COVID-19 pandemic forced many countries to shut down their economies, which led to a sharp decline in markets as most asset classes were negatively impacted by investors seeking to reduce risk. Gross domestic product (GDP) figures in the first quarter of 2020 were the weakest since the "Great Recession" of 2008-2009, and second-quarter GDP was even worse, indicating the severe impact of the pandemic.

Central banks and governments around the world announced broad measures to limit economic damage and help financial markets continue to function properly amid COVID-19. For instance, the Bank of Canada (the *BoC*) lowered its benchmark overnight interest rate three times, by 50 basis points (*bps*) each time, to 0.25%. The BoC also implemented a bond-buying program to support the economy.

Bond yields declined materially given the expectations for an extended period of low interest rates.

The U.S. Federal Reserve Board (the *Fed*) reduced its federal funds rate by 50 bps and 100 bps at two meetings in March, lowering the Fed's target range to 0.00%-0.25%. The Fed noted it expects to maintain this low interest rate through 2021. The Fed also initiated a spending program to support credit conditions for both households and businesses.

Other central banks and governments also implemented substantial asset purchases and additional support to provide market liquidity and help restore their economies. The European Union (*EU*) implemented a €750 billion fund to promote economic recovery across the EU. Almost every emerging markets central bank lowered interest rates in the first quarter, while Malaysia, Poland, India and Indonesia announced extensive economic stimulus packages.

Supported by those fiscal and monetary measures, markets rebounded substantially from their low levels reached in late March. Economic data improved dramatically in the second quarter relative to the first-quarter low levels, leading to stronger investor optimism as economies gradually began to reopen, and both spending and labour markets improved as a result.

U.S. equity markets posted strong returns over the period despite the first-quarter decline, as stocks posted significant gains following their March lows. The rebound began with businesses that were most widely expected to benefit from a sharp economic recovery as global economies began reopening. The information technology, consumer discretionary and communication services sectors were the strongest performers over the period, while the energy, real estate and financials sectors posted negative returns. Large-capitalization stocks significantly outperformed mid- and small-cap stocks.

Prices for commodities, which include oil, copper and iron ore, were strong to begin the period before reversing course on concerns about lower demand. However, in anticipation of stimulus and infrastructure spending, many base and bulk metals started moving back to recent high levels.

Some emerging markets currencies (most notably those of Russia, Brazil and Mexico) were stronger in response to a sharp recovery in oil prices later in the period, as the Organization of the Petroleum Exporting Countries and Russia agreed on oil production and output levels. Signs of a recovery in oil demand also arose within countries where the virus spread had slowed.

Meanwhile, gold was strong throughout the period, initially owing to strong physical demand and a weaker U.S. dollar, and then later as risk-averse investors favoured safety and inflation protection.

Renaissance Emerging Markets Equity Private Pool was the most significant detractor from the Portfolio's performance relative to the blended benchmark, followed by Renaissance Equity Income Private Pool.

Renaissance International Equity Private Pool was the most significant contributor to the Portfolio's performance relative to the blended

benchmark, followed by Renaissance U.S. Equity Private Pool and Renaissance Canadian Equity Private Pool.

Recent Developments

The composition of the Independent Review Committee (*IRC*) changed during the period. Don Hunter and Merle Kriss retired effective April 26, 2020. Effective April 27, 2020, David Forster and Deborah Leckman were appointed as members of the IRC. Marcia Lewis Brown was appointed Chair effective April 1, 2020.

The international spread of COVID-19 caused a significant slowdown in the global economy and volatility in financial markets. The COVID-19 outbreak may adversely affect global markets and the performance of the Portfolio.

Related Party Transactions

CIBC and its affiliates have the following roles and responsibilities with respect to the Portfolio, and receive the fees described below in connection with their roles and responsibilities.

Manager, Trustee, and Portfolio Advisor of the Portfolio

CAMI, a wholly-owned subsidiary of CIBC, is the Portfolio's Manager, Trustee, and Portfolio Advisor. As Manager, CAMI receives management fees with respect to the Portfolio's day-to-day business and operations, calculated based on the net asset value of each respective class of units of the Portfolio as described in *Management Fees*. As Trustee, CAMI holds title to the Portfolio's property (cash and securities) on behalf of its unitholders. As Portfolio Advisor, CAMI provides, or arranges to provide for, investment advice and portfolio management services to the Portfolio. CAMI also compensates dealers in connection with their marketing activities regarding the Portfolio. From time to time, CAMI may invest in units of the Portfolio.

Distributor

Dealers and other firms sell units of the Portfolio to investors. These dealers and other firms include CAMI's related dealers such as the CIBC Investor's Edge discount brokerage division of CIBC Investor Services Inc. (*CIBC ISI*), the CIBC Imperial Service division of CIBC ISI, and the CIBC Wood Gundy division of CIBC World Markets Inc. (*CIBC WM*). CIBC ISI and CIBC WM are wholly-owned subsidiaries of CIBC.

CAMI may pay sales commissions and trailing commissions to these dealers and firms in connection with the sale of units of the Portfolio. These dealers and other firms may pay a portion of these sales commissions and trailing commissions to their advisors who sell units of the Portfolio to investors.

Portfolio Transactions

The Portfolio may undertake currency and currency derivative transactions where CIBC WM, CIBC World Markets Corp., or any affiliate of CIBC is the counterparty (the *Related Party Transactions*) in reliance on the standing instructions issued by the IRC.

At least annually, the IRC reviews the Related Party Transactions for which they have issued standing instructions. The IRC is required to

advise the Canadian securities regulatory authorities, after a matter has been referred to or reported to it by the Manager, if it determines that an investment decision was not made in accordance with conditions imposed by securities legislation or the IRC in any Related Party Transactions requiring its approval.

Custodian

CIBC Mellon Trust Company is the custodian of the Portfolio (the *Custodian*). The Custodian holds all cash and securities for the Portfolio and ensures that those assets are kept separate from any other cash or securities that the custodian might be holding. The Custodian also provides other services to the Portfolio including record-keeping and processing foreign exchange transactions. The fees and spreads for services of the Custodian are paid by CAMI and charged to the Portfolio on a recoverable basis. CIBC owns a 50% interest in the Custodian.

Service Provider

CIBC Mellon Global Securities Services Company (*CIBC GSS*) provides certain services to the Portfolio, including fund accounting and reporting, and portfolio valuation. Such servicing fees are paid by the Manager, and charged to the Portfolio on a recoverable basis. CIBC indirectly owns a 50% interest in CIBC GSS.

Axiom Balanced Income Portfolio

Financial Highlights

The following tables show selected key financial information about the Portfolio and are intended to help you understand the Portfolio's financial performance for the period ended August 31.

The Portfolio's Net Assets per Unit¹ - Class A Units

	2020	2019	2018	2017	2016
Net Assets, beginning of period	\$ 13.39	\$ 13.20	\$ 12.92	\$ 12.84	\$ 12.41
Increase (decrease) from operations:					
Total revenue	\$ 0.35	\$ 0.41	\$ 0.42	\$ 0.38	\$ 0.38
Total expenses	(0.27)	(0.26)	(0.27)	(0.27)	(0.26)
Realized gains (losses) for the period	0.38	0.38	0.52	0.39	0.35
Unrealized gains (losses) for the period	0.17	0.07	(0.11)	(0.23)	0.19
Total increase (decrease) from operations²	\$ 0.63	\$ 0.60	\$ 0.56	\$ 0.27	\$ 0.66
Distributions:					
From income (excluding dividends)	\$ 0.02	\$ 0.03	\$ 0.05	\$ 0.03	\$ 0.01
From dividends	0.06	0.06	0.04	0.06	—
From capital gains	—	0.33	0.20	0.09	0.25
Return of capital	—	—	—	—	—
Total Distributions³	\$ 0.08	\$ 0.42	\$ 0.29	\$ 0.18	\$ 0.26
Net Assets, end of period	\$ 13.99	\$ 13.39	\$ 13.20	\$ 12.92	\$ 12.84

¹ This information is derived from the Portfolio's audited annual financial statements.

² Net assets and distributions are based on the actual number of units outstanding at the relevant time. The total increase (decrease) from operations is based on the weighted average number of units outstanding during the period.

³ Distributions were paid in cash, reinvested in additional units of the Portfolio, or both.

Ratios and Supplemental Data - Class A Units

	2020	2019	2018	2017	2016
Total Net Asset Value (000s)⁴	\$ 81,161	\$ 84,669	\$ 89,801	\$ 90,578	\$ 104,635
Number of Units Outstanding⁴	5,800,928	6,325,325	6,801,551	7,009,290	8,151,109
Management Expense Ratio⁵	2.04%	2.04%	2.04%	2.08%	2.08%
Management Expense Ratio before waivers or absorptions⁵	2.06%	2.04%	2.04%	2.12%	2.08%
Trading Expense Ratio⁷	0.05%	0.05%	0.05%	0.05%	0.06%
Portfolio Turnover Rate⁸	15.48%	13.97%	11.95%	10.91%	13.11%
Net Asset Value per Unit	\$ 13.99	\$ 13.39	\$ 13.20	\$ 12.92	\$ 12.84

⁴ This information is presented as at August 31 of the period(s) shown.

⁵ Management expense ratio is based on the total expenses of the fund (excluding commissions and other portfolio transaction costs), incurred by or allocated to a class of units for the period shown, expressed as an annualized percentage of the daily average net asset value of that class during the period.

⁶ The decision to waive and/or absorb management fees and operating expenses is at the discretion of the Manager. The practice of waiving and/or absorbing management fees and operating expenses may continue indefinitely or may be terminated at any time without notice to unitholders.

⁷ The trading expense ratio represents total commissions and other portfolio transaction costs before income taxes expressed as an annualized percentage of the daily average net asset value during the period.

⁸ The portfolio turnover rate indicates how actively the portfolio advisor manages the portfolio investments. A portfolio turnover rate of 100% is equivalent to a fund buying and selling all of the securities in its portfolio once in the course of the period. The higher a portfolio turnover rate in a period, the greater the trading costs payable by a fund in the period, and the greater the chance of an investor receiving taxable capital gains in the year. There is not necessarily a relationship between a high turnover rate and the performance of a fund.

Axiom Balanced Income Portfolio

The Portfolio's Net Assets per Unit¹ - Class T4 Units

	2020	2019	2018	2017	2016
Net Assets, beginning of period	\$ 10.61	\$ 10.50	\$ 10.47	\$ 10.76	\$ 10.83
Increase (decrease) from operations:					
Total revenue	\$ 0.27	\$ 0.32	\$ 0.34	\$ 0.32	\$ 0.33
Total expenses	(0.20)	(0.20)	(0.21)	(0.21)	(0.21)
Realized gains (losses) for the period	0.30	0.30	0.42	0.29	0.31
Unrealized gains (losses) for the period	0.13	(0.04)	(0.05)	(0.18)	0.11
Total increase (decrease) from operations²	\$ 0.50	\$ 0.38	\$ 0.50	\$ 0.22	\$ 0.54
Distributions:					
From income (excluding dividends)	\$ 0.28	\$ 0.27	\$ 0.31	\$ 0.28	\$ 0.28
From dividends	0.02	0.02	0.03	0.02	0.15
From capital gains	—	0.05	0.04	0.22	0.24
Return of capital	0.11	0.07	0.05	—	—
Total Distributions³	\$ 0.41	\$ 0.41	\$ 0.43	\$ 0.52	\$ 0.67
Net Assets, end of period	\$ 10.73	\$ 10.61	\$ 10.50	\$ 10.47	\$ 10.76

¹ This information is derived from the Portfolio's audited annual financial statements.

² Net assets and distributions are based on the actual number of units outstanding at the relevant time. The total increase (decrease) from operations is based on the weighted average number of units outstanding during the period.

³ Distributions were paid in cash, reinvested in additional units of the Portfolio, or both.

Ratios and Supplemental Data - Class T4 Units

	2020	2019	2018	2017	2016
Total Net Asset Value (000s)⁴	\$ 5,282	\$ 6,990	\$ 14,664	\$ 17,606	\$ 11,846
Number of Units Outstanding⁴	492,174	658,964	1,396,135	1,682,060	1,100,755
Management Expense Ratio⁵	1.94%	1.93%	1.95%	2.01%	1.98%
Management Expense Ratio before waivers or absorptions⁶	1.98%	1.95%	1.95%	2.01%	1.98%
Trading Expense Ratio⁷	0.05%	0.05%	0.05%	0.05%	0.06%
Portfolio Turnover Rate⁸	15.48%	13.97%	11.95%	10.91%	13.11%
Net Asset Value per Unit	\$ 10.73	\$ 10.61	\$ 10.50	\$ 10.47	\$ 10.76

⁴ This information is presented as at August 31 of the period(s) shown.

⁵ Management expense ratio is based on the total expenses of the fund (excluding commissions and other portfolio transaction costs), incurred by or allocated to a class of units for the period shown, expressed as an annualized percentage of the daily average net asset value of that class during the period.

⁶ The decision to waive and/or absorb management fees and operating expenses is at the discretion of the Manager. The practice of waiving and/or absorbing management fees and operating expenses may continue indefinitely or may be terminated at any time without notice to unitholders.

⁷ The trading expense ratio represents total commissions and other portfolio transaction costs before income taxes expressed as an annualized percentage of the daily average net asset value during the period.

⁸ The portfolio turnover rate indicates how actively the portfolio advisor manages the portfolio investments. A portfolio turnover rate of 100% is equivalent to a fund buying and selling all of the securities in its portfolio once in the course of the period. The higher a portfolio turnover rate in a period, the greater the trading costs payable by a fund in the period, and the greater the chance of an investor receiving taxable capital gains in the year. There is not necessarily a relationship between a high turnover rate and the performance of a fund.

Axiom Balanced Income Portfolio

The Portfolio's Net Assets per Unit¹ - Class T6 Units

	2020	2019	2018	2017	2016
Net Assets, beginning of period	\$ 8.18	\$ 8.26	\$ 8.40	\$ 8.81	\$ 9.10
Increase (decrease) from operations:					
Total revenue	\$ 0.21	\$ 0.25	\$ 0.27	\$ 0.26	\$ 0.28
Total expenses	(0.16)	(0.16)	(0.17)	(0.18)	(0.17)
Realized gains (losses) for the period	0.23	0.24	0.35	0.26	0.25
Unrealized gains (losses) for the period	0.08	(0.01)	(0.05)	(0.15)	0.13
Total increase (decrease) from operations²	\$ 0.36	\$ 0.32	\$ 0.40	\$ 0.19	\$ 0.49
Distributions:					
From income (excluding dividends)	\$ 0.33	\$ 0.32	\$ 0.34	\$ 0.35	\$ 0.35
From dividends	0.01	0.01	0.01	0.02	0.19
From capital gains	—	0.04	—	0.22	0.24
Return of capital	0.14	0.11	0.16	—	—
Total Distributions³	\$ 0.48	\$ 0.48	\$ 0.51	\$ 0.59	\$ 0.78
Net Assets, end of period	\$ 8.09	\$ 8.18	\$ 8.26	\$ 8.40	\$ 8.81

¹ This information is derived from the Portfolio's audited annual financial statements.

² Net assets and distributions are based on the actual number of units outstanding at the relevant time. The total increase (decrease) from operations is based on the weighted average number of units outstanding during the period.

³ Distributions were paid in cash, reinvested in additional units of the Portfolio, or both.

Ratios and Supplemental Data - Class T6 Units

	2020	2019	2018	2017	2016
Total Net Asset Value (000s)⁴	\$ 2,101	\$ 1,502	\$ 2,085	\$ 3,917	\$ 4,494
Number of Units Outstanding⁴	259,653	183,718	252,345	466,093	510,077
Management Expense Ratio⁵	2.01%	1.98%	2.00%	2.04%	1.99%
Management Expense Ratio before waivers or absorptions⁶	2.02%	1.99%	2.00%	2.04%	1.99%
Trading Expense Ratio⁷	0.05%	0.05%	0.05%	0.05%	0.06%
Portfolio Turnover Rate⁸	15.48%	13.97%	11.95%	10.91%	13.11%
Net Asset Value per Unit	\$ 8.09	\$ 8.18	\$ 8.26	\$ 8.40	\$ 8.81

⁴ This information is presented as at August 31 of the period(s) shown.

⁵ Management expense ratio is based on the total expenses of the fund (excluding commissions and other portfolio transaction costs), incurred by or allocated to a class of units for the period shown, expressed as an annualized percentage of the daily average net asset value of that class during the period.

⁶ The decision to waive and/or absorb management fees and operating expenses is at the discretion of the Manager. The practice of waiving and/or absorbing management fees and operating expenses may continue indefinitely or may be terminated at any time without notice to unitholders.

⁷ The trading expense ratio represents total commissions and other portfolio transaction costs before income taxes expressed as an annualized percentage of the daily average net asset value during the period.

⁸ The portfolio turnover rate indicates how actively the portfolio advisor manages the portfolio investments. A portfolio turnover rate of 100% is equivalent to a fund buying and selling all of the securities in its portfolio once in the course of the period. The higher a portfolio turnover rate in a period, the greater the trading costs payable by a fund in the period, and the greater the chance of an investor receiving taxable capital gains in the year. There is not necessarily a relationship between a high turnover rate and the performance of a fund.

Axiom Balanced Income Portfolio

The Portfolio's Net Assets per Unit¹ - Class T8 Units

	2020	2019	2018	2017	2016
Net Assets, beginning of period	\$ 6.86	\$ 7.09	\$ 7.36	\$ 7.82	\$ 8.26
Increase (decrease) from operations:					
Total revenue	\$ 0.17	\$ 0.22	\$ 0.23	\$ 0.23	\$ 0.25
Total expenses	(0.14)	(0.14)	(0.15)	(0.16)	(0.17)
Realized gains (losses) for the period	0.19	0.20	0.30	0.25	0.22
Unrealized gains (losses) for the period	0.08	0.01	(0.03)	(0.09)	0.09
Total increase (decrease) from operations²	\$ 0.30	\$ 0.29	\$ 0.35	\$ 0.23	\$ 0.39
Distributions:					
From income (excluding dividends)	\$ 0.37	\$ 0.36	\$ 0.39	\$ 0.40	\$ 0.42
From dividends	0.01	0.01	0.01	0.01	0.23
From capital gains	—	0.04	—	0.20	0.22
Return of capital	0.16	0.14	0.19	—	—
Total Distributions³	\$ 0.54	\$ 0.55	\$ 0.59	\$ 0.61	\$ 0.87
Net Assets, end of period	\$ 6.65	\$ 6.86	\$ 7.09	\$ 7.36	\$ 7.82

¹ This information is derived from the Portfolio's audited annual financial statements.

² Net assets and distributions are based on the actual number of units outstanding at the relevant time. The total increase (decrease) from operations is based on the weighted average number of units outstanding during the period.

³ Distributions were paid in cash, reinvested in additional units of the Portfolio, or both.

Ratios and Supplemental Data - Class T8 Units

	2020	2019	2018	2017	2016
Total Net Asset Value (000s)⁴	\$ 352	\$ 582	\$ 702	\$ 1,014	\$ 1,678
Number of Units Outstanding⁴	52,908	84,791	99,029	137,615	214,606
Management Expense Ratio⁵	2.10%	2.08%	2.09%	2.13%	2.11%
Management Expense Ratio before waivers or absorptions⁶	2.12%	2.09%	2.09%	2.16%	2.11%
Trading Expense Ratio⁷	0.05%	0.05%	0.05%	0.05%	0.06%
Portfolio Turnover Rate⁸	15.48%	13.97%	11.95%	10.91%	13.11%
Net Asset Value per Unit	\$ 6.65	\$ 6.86	\$ 7.09	\$ 7.36	\$ 7.82

⁴ This information is presented as at August 31 of the period(s) shown.

⁵ Management expense ratio is based on the total expenses of the fund (excluding commissions and other portfolio transaction costs), incurred by or allocated to a class of units for the period shown, expressed as an annualized percentage of the daily average net asset value of that class during the period.

⁶ The decision to waive and/or absorb management fees and operating expenses is at the discretion of the Manager. The practice of waiving and/or absorbing management fees and operating expenses may continue indefinitely or may be terminated at any time without notice to unitholders.

⁷ The trading expense ratio represents total commissions and other portfolio transaction costs before income taxes expressed as an annualized percentage of the daily average net asset value during the period.

⁸ The portfolio turnover rate indicates how actively the portfolio advisor manages the portfolio investments. A portfolio turnover rate of 100% is equivalent to a fund buying and selling all of the securities in its portfolio once in the course of the period. The higher a portfolio turnover rate in a period, the greater the trading costs payable by a fund in the period, and the greater the chance of an investor receiving taxable capital gains in the year. There is not necessarily a relationship between a high turnover rate and the performance of a fund.

Axiom Balanced Income Portfolio

The Portfolio's Net Assets per Unit¹ - Select Class Units

	2020	2019	2018	2017	2016
Net Assets, beginning of period	\$ 12.92	\$ 12.68	\$ 12.40	\$ 12.34	\$ 11.98
Increase (decrease) from operations:					
Total revenue	\$ 0.34	\$ 0.39	\$ 0.41	\$ 0.37	\$ 0.37
Total expenses	(0.24)	(0.23)	(0.24)	(0.23)	(0.23)
Realized gains (losses) for the period	0.37	0.37	0.52	0.38	0.33
Unrealized gains (losses) for the period	0.19	0.08	(0.13)	(0.21)	0.27
Total increase (decrease) from operations²	\$ 0.66	\$ 0.61	\$ 0.56	\$ 0.31	\$ 0.74
Distributions:					
From income (excluding dividends)	\$ 0.02	\$ 0.04	\$ 0.06	\$ 0.03	\$ 0.01
From dividends	0.08	0.07	0.05	0.07	—
From capital gains	—	0.25	0.17	0.12	0.31
Return of capital	—	—	—	—	—
Total Distributions³	\$ 0.10	\$ 0.36	\$ 0.28	\$ 0.22	\$ 0.32
Net Assets, end of period	\$ 13.49	\$ 12.92	\$ 12.68	\$ 12.40	\$ 12.34

¹ This information is derived from the Portfolio's audited annual financial statements.

² Net assets and distributions are based on the actual number of units outstanding at the relevant time. The total increase (decrease) from operations is based on the weighted average number of units outstanding during the period.

³ Distributions were paid in cash, reinvested in additional units of the Portfolio, or both.

Ratios and Supplemental Data - Select Class Units

	2020	2019	2018	2017	2016
Total Net Asset Value (000s)⁴	\$ 5,682	\$ 6,981	\$ 7,681	\$ 9,601	\$ 10,592
Number of Units Outstanding⁴	421,181	540,476	605,704	774,170	858,432
Management Expense Ratio⁵	1.89%	1.89%	1.89%	1.89%	1.90%
Management Expense Ratio before waivers or absorptions⁶	2.35%	2.34%	2.34%	2.40%	2.09%
Trading Expense Ratio⁷	0.05%	0.05%	0.05%	0.05%	0.06%
Portfolio Turnover Rate⁸	15.48%	13.97%	11.95%	10.91%	13.11%
Net Asset Value per Unit	\$ 13.49	\$ 12.92	\$ 12.68	\$ 12.40	\$ 12.34

⁴ This information is presented as at August 31 of the period(s) shown.

⁵ Management expense ratio is based on the total expenses of the fund (excluding commissions and other portfolio transaction costs), incurred by or allocated to a class of units for the period shown, expressed as an annualized percentage of the daily average net asset value of that class during the period.

⁶ The decision to waive and/or absorb management fees and operating expenses is at the discretion of the Manager. The practice of waiving and/or absorbing management fees and operating expenses may continue indefinitely or may be terminated at any time without notice to unitholders.

⁷ The trading expense ratio represents total commissions and other portfolio transaction costs before income taxes expressed as an annualized percentage of the daily average net asset value during the period.

⁸ The portfolio turnover rate indicates how actively the portfolio advisor manages the portfolio investments. A portfolio turnover rate of 100% is equivalent to a fund buying and selling all of the securities in its portfolio once in the course of the period. The higher a portfolio turnover rate in a period, the greater the trading costs payable by a fund in the period, and the greater the chance of an investor receiving taxable capital gains in the year. There is not necessarily a relationship between a high turnover rate and the performance of a fund.

Axiom Balanced Income Portfolio

The Portfolio's Net Assets per Unit¹ - Select-T4 Class Units

	2020	2019	2018	2017	2016
Net Assets, beginning of period	\$ 10.03	\$ 9.91	\$ 9.86	\$ 10.09	\$ 10.15
Increase (decrease) from operations:					
Total revenue	\$ 0.26	\$ 0.30	\$ 0.32	\$ 0.29	\$ 0.32
Total expenses	(0.18)	(0.18)	(0.18)	(0.19)	(0.19)
Realized gains (losses) for the period	0.28	0.28	0.41	0.29	0.24
Unrealized gains (losses) for the period	0.14	(0.04)	(0.07)	(0.21)	0.65
Total increase (decrease) from operations²	\$ 0.50	\$ 0.36	\$ 0.48	\$ 0.18	\$ 1.02
Distributions:					
From income (excluding dividends)	\$ 0.27	\$ 0.26	\$ 0.28	\$ 0.28	\$ 0.26
From dividends	0.02	0.02	0.04	0.02	0.14
From capital gains	—	0.06	0.04	0.16	0.22
Return of capital	0.10	0.04	0.04	—	—
Total Distributions³	\$ 0.39	\$ 0.38	\$ 0.40	\$ 0.46	\$ 0.62
Net Assets, end of period	\$ 10.16	\$ 10.03	\$ 9.91	\$ 9.86	\$ 10.09

¹ This information is derived from the Portfolio's audited annual financial statements.

² Net assets and distributions are based on the actual number of units outstanding at the relevant time. The total increase (decrease) from operations is based on the weighted average number of units outstanding during the period.

³ Distributions were paid in cash, reinvested in additional units of the Portfolio, or both.

Ratios and Supplemental Data - Select-T4 Class Units

	2020	2019	2018	2017	2016
Total Net Asset Value (000s)⁴	\$ 531	\$ 639	\$ 2,026	\$ 2,991	\$ 2,646
Number of Units Outstanding⁴	52,256	63,673	204,340	303,364	262,212
Management Expense Ratio⁵	1.81%	1.81%	1.83%	1.86%	1.87%
Management Expense Ratio before waivers or absorptions⁶	2.26%	2.25%	2.26%	2.36%	2.05%
Trading Expense Ratio⁷	0.05%	0.05%	0.05%	0.05%	0.06%
Portfolio Turnover Rate⁸	15.48%	13.97%	11.95%	10.91%	13.11%
Net Asset Value per Unit	\$ 10.16	\$ 10.03	\$ 9.91	\$ 9.86	\$ 10.09

⁴ This information is presented as at August 31 of the period(s) shown.

⁵ Management expense ratio is based on the total expenses of the fund (excluding commissions and other portfolio transaction costs), incurred by or allocated to a class of units for the period shown, expressed as an annualized percentage of the daily average net asset value of that class during the period.

⁶ The decision to waive and/or absorb management fees and operating expenses is at the discretion of the Manager. The practice of waiving and/or absorbing management fees and operating expenses may continue indefinitely or may be terminated at any time without notice to unitholders.

⁷ The trading expense ratio represents total commissions and other portfolio transaction costs before income taxes expressed as an annualized percentage of the daily average net asset value during the period.

⁸ The portfolio turnover rate indicates how actively the portfolio advisor manages the portfolio investments. A portfolio turnover rate of 100% is equivalent to a fund buying and selling all of the securities in its portfolio once in the course of the period. The higher a portfolio turnover rate in a period, the greater the trading costs payable by a fund in the period, and the greater the chance of an investor receiving taxable capital gains in the year. There is not necessarily a relationship between a high turnover rate and the performance of a fund.

Axiom Balanced Income Portfolio

The Portfolio's Net Assets per Unit¹ - Select-T6 Class Units

	2020	2019	2018	2017	2016
Net Assets, beginning of period	\$ 8.33	\$ 8.42	\$ 8.56	\$ 8.88	\$ 9.22
Increase (decrease) from operations:					
Total revenue	\$ 0.21	\$ 0.26	\$ 0.28	\$ 0.26	\$ 0.28
Total expenses	(0.16)	(0.16)	(0.17)	(0.17)	(0.17)
Realized gains (losses) for the period	0.23	0.24	0.34	0.26	0.26
Unrealized gains (losses) for the period	0.13	0.06	(0.08)	(0.15)	0.07
Total increase (decrease) from operations²	\$ 0.41	\$ 0.40	\$ 0.37	\$ 0.20	\$ 0.44
Distributions:					
From income (excluding dividends)	\$ 0.33	\$ 0.32	\$ 0.36	\$ 0.35	\$ 0.35
From dividends	0.01	0.01	0.03	0.02	0.19
From capital gains	—	0.09	0.10	0.15	0.29
Return of capital	0.14	0.06	0.03	—	—
Total Distributions³	\$ 0.48	\$ 0.48	\$ 0.52	\$ 0.52	\$ 0.83
Net Assets, end of period	\$ 8.26	\$ 8.33	\$ 8.42	\$ 8.56	\$ 8.88

¹ This information is derived from the Portfolio's audited annual financial statements.

² Net assets and distributions are based on the actual number of units outstanding at the relevant time. The total increase (decrease) from operations is based on the weighted average number of units outstanding during the period.

³ Distributions were paid in cash, reinvested in additional units of the Portfolio, or both.

Ratios and Supplemental Data - Select-T6 Class Units

	2020	2019	2018	2017	2016
Total Net Asset Value (000s)⁴	\$ 973	\$ 1,003	\$ 1,032	\$ 1,056	\$ 1,076
Number of Units Outstanding⁴	117,828	120,356	122,565	123,401	121,081
Management Expense Ratio⁵	1.96%	1.96%	1.96%	1.96%	1.96%
Management Expense Ratio before waivers or absorptions⁶	2.42%	2.41%	2.41%	2.47%	2.14%
Trading Expense Ratio⁷	0.05%	0.05%	0.05%	0.05%	0.06%
Portfolio Turnover Rate⁸	15.48%	13.97%	11.95%	10.91%	13.11%
Net Asset Value per Unit	\$ 8.26	\$ 8.33	\$ 8.42	\$ 8.56	\$ 8.88

⁴ This information is presented as at August 31 of the period(s) shown.

⁵ Management expense ratio is based on the total expenses of the fund (excluding commissions and other portfolio transaction costs), incurred by or allocated to a class of units for the period shown, expressed as an annualized percentage of the daily average net asset value of that class during the period.

⁶ The decision to waive and/or absorb management fees and operating expenses is at the discretion of the Manager. The practice of waiving and/or absorbing management fees and operating expenses may continue indefinitely or may be terminated at any time without notice to unitholders.

⁷ The trading expense ratio represents total commissions and other portfolio transaction costs before income taxes expressed as an annualized percentage of the daily average net asset value during the period.

⁸ The portfolio turnover rate indicates how actively the portfolio advisor manages the portfolio investments. A portfolio turnover rate of 100% is equivalent to a fund buying and selling all of the securities in its portfolio once in the course of the period. The higher a portfolio turnover rate in a period, the greater the trading costs payable by a fund in the period, and the greater the chance of an investor receiving taxable capital gains in the year. There is not necessarily a relationship between a high turnover rate and the performance of a fund.

Axiom Balanced Income Portfolio

The Portfolio's Net Assets per Unit¹ - Elite Class Units

	2020	2019	2018	2017	2016
Net Assets, beginning of period	\$ 12.68	\$ 12.58	\$ 12.26	\$ 12.08	\$ 11.70
Increase (decrease) from operations:					
Total revenue	\$ 0.33	\$ 0.39	\$ 0.40	\$ 0.36	\$ 0.37
Total expenses	(0.18)	(0.17)	(0.18)	(0.17)	(0.17)
Realized gains (losses) for the period	0.36	0.36	0.50	0.36	0.34
Unrealized gains (losses) for the period	0.21	0.07	(0.09)	(0.20)	0.13
Total increase (decrease) from operations²	\$ 0.72	\$ 0.65	\$ 0.63	\$ 0.35	\$ 0.67
Distributions:					
From income (excluding dividends)	\$ 0.03	\$ 0.05	\$ 0.08	\$ 0.03	\$ 0.01
From dividends	0.13	0.12	0.08	0.12	—
From capital gains	—	0.37	0.14	—	0.32
Return of capital	—	—	—	—	—
Total Distributions³	\$ 0.16	\$ 0.54	\$ 0.30	\$ 0.15	\$ 0.33
Net Assets, end of period	\$ 13.25	\$ 12.68	\$ 12.58	\$ 12.26	\$ 12.08

¹ This information is derived from the Portfolio's audited annual financial statements.

² Net assets and distributions are based on the actual number of units outstanding at the relevant time. The total increase (decrease) from operations is based on the weighted average number of units outstanding during the period.

³ Distributions were paid in cash, reinvested in additional units of the Portfolio, or both.

Ratios and Supplemental Data - Elite Class Units

	2020	2019	2018	2017	2016
Total Net Asset Value (000s)⁴	\$ 6,908	\$ 7,020	\$ 7,894	\$ 9,068	\$ 7,298
Number of Units Outstanding⁴	521,358	553,560	627,750	739,432	604,033
Management Expense Ratio⁵	1.43%	1.43%	1.43%	1.43%	1.43%
Management Expense Ratio before waivers or absorptions⁶	1.82%	1.81%	1.80%	1.86%	1.60%
Trading Expense Ratio⁷	0.05%	0.05%	0.05%	0.05%	0.06%
Portfolio Turnover Rate⁸	15.48%	13.97%	11.95%	10.91%	13.11%
Net Asset Value per Unit	\$ 13.25	\$ 12.68	\$ 12.58	\$ 12.26	\$ 12.08

⁴ This information is presented as at August 31 of the period(s) shown.

⁵ Management expense ratio is based on the total expenses of the fund (excluding commissions and other portfolio transaction costs), incurred by or allocated to a class of units for the period shown, expressed as an annualized percentage of the daily average net asset value of that class during the period.

⁶ The decision to waive and/or absorb management fees and operating expenses is at the discretion of the Manager. The practice of waiving and/or absorbing management fees and operating expenses may continue indefinitely or may be terminated at any time without notice to unitholders.

⁷ The trading expense ratio represents total commissions and other portfolio transaction costs before income taxes expressed as an annualized percentage of the daily average net asset value during the period.

⁸ The portfolio turnover rate indicates how actively the portfolio advisor manages the portfolio investments. A portfolio turnover rate of 100% is equivalent to a fund buying and selling all of the securities in its portfolio once in the course of the period. The higher a portfolio turnover rate in a period, the greater the trading costs payable by a fund in the period, and the greater the chance of an investor receiving taxable capital gains in the year. There is not necessarily a relationship between a high turnover rate and the performance of a fund.

Axiom Balanced Income Portfolio

The Portfolio's Net Assets per Unit¹ - Elite-T4 Class Units

	2020	2019	2018	2017	2016
Net Assets, beginning of period	\$ 9.86	\$ 9.72	\$ 9.62	\$ 9.85	\$ 9.85
Increase (decrease) from operations:					
Total revenue	\$ 0.25	\$ 0.29	\$ 0.30	\$ 0.29	\$ 0.30
Total expenses	(0.14)	(0.13)	(0.13)	(0.13)	(0.13)
Realized gains (losses) for the period	0.28	0.27	0.44	0.27	0.27
Unrealized gains (losses) for the period	0.16	(0.17)	(0.03)	(0.15)	0.23
Total increase (decrease) from operations²	\$ 0.55	\$ 0.26	\$ 0.58	\$ 0.28	\$ 0.67
Distributions:					
From income (excluding dividends)	\$ 0.28	\$ 0.27	\$ 0.27	\$ 0.26	\$ 0.26
From dividends	0.03	0.03	0.05	0.04	0.13
From capital gains	—	—	—	0.20	0.21
Return of capital	0.08	0.08	0.07	—	—
Total Distributions³	\$ 0.39	\$ 0.38	\$ 0.39	\$ 0.50	\$ 0.60
Net Assets, end of period	\$ 10.02	\$ 9.86	\$ 9.72	\$ 9.62	\$ 9.85

¹ This information is derived from the Portfolio's audited annual financial statements.

² Net assets and distributions are based on the actual number of units outstanding at the relevant time. The total increase (decrease) from operations is based on the weighted average number of units outstanding during the period.

³ Distributions were paid in cash, reinvested in additional units of the Portfolio, or both.

Ratios and Supplemental Data - Elite-T4 Class Units

	2020	2019	2018	2017	2016
Total Net Asset Value (000s)⁴	\$ 470	\$ 756	\$ 1,611	\$ 6,983	\$ 4,398
Number of Units Outstanding⁴	46,900	76,647	165,860	725,659	446,302
Management Expense Ratio⁵	1.44%	1.40%	1.37%	1.35%	1.35%
Management Expense Ratio before waivers or absorptions⁶	1.83%	1.79%	1.73%	1.75%	1.51%
Trading Expense Ratio⁷	0.05%	0.05%	0.05%	0.05%	0.06%
Portfolio Turnover Rate⁸	15.48%	13.97%	11.95%	10.91%	13.11%
Net Asset Value per Unit	\$ 10.02	\$ 9.86	\$ 9.72	\$ 9.62	\$ 9.85

⁴ This information is presented as at August 31 of the period(s) shown.

⁵ Management expense ratio is based on the total expenses of the fund (excluding commissions and other portfolio transaction costs), incurred by or allocated to a class of units for the period shown, expressed as an annualized percentage of the daily average net asset value of that class during the period.

⁶ The decision to waive and/or absorb management fees and operating expenses is at the discretion of the Manager. The practice of waiving and/or absorbing management fees and operating expenses may continue indefinitely or may be terminated at any time without notice to unitholders.

⁷ The trading expense ratio represents total commissions and other portfolio transaction costs before income taxes expressed as an annualized percentage of the daily average net asset value during the period.

⁸ The portfolio turnover rate indicates how actively the portfolio advisor manages the portfolio investments. A portfolio turnover rate of 100% is equivalent to a fund buying and selling all of the securities in its portfolio once in the course of the period. The higher a portfolio turnover rate in a period, the greater the trading costs payable by a fund in the period, and the greater the chance of an investor receiving taxable capital gains in the year. There is not necessarily a relationship between a high turnover rate and the performance of a fund.

Axiom Balanced Income Portfolio

The Portfolio's Net Assets per Unit¹ - Class F Units

	2020	2019	2018	2017	2016
Net Assets, beginning of period	\$ 13.73	\$ 13.31	\$ 13.04	\$ 12.84	\$ 12.28
Increase (decrease) from operations:					
Total revenue	\$ 0.36	\$ 0.42	\$ 0.43	\$ 0.38	\$ 0.39
Total expenses	(0.13)	(0.12)	(0.11)	(0.15)	(0.14)
Realized gains (losses) for the period	0.39	0.39	0.49	0.35	0.37
Unrealized gains (losses) for the period	0.23	0.07	(0.07)	(0.23)	0.09
Total increase (decrease) from operations²	\$ 0.85	\$ 0.76	\$ 0.74	\$ 0.35	\$ 0.71
Distributions:					
From income (excluding dividends)	\$ 0.05	\$ 0.06	\$ 0.12	\$ 0.03	\$ 0.01
From dividends	0.19	0.12	0.12	0.16	—
From capital gains	—	0.17	0.22	—	0.22
Return of capital	—	—	—	—	—
Total Distributions³	\$ 0.24	\$ 0.35	\$ 0.46	\$ 0.19	\$ 0.23
Net Assets, end of period	\$ 14.35	\$ 13.73	\$ 13.31	\$ 13.04	\$ 12.84

¹ This information is derived from the Portfolio's audited annual financial statements.

² Net assets and distributions are based on the actual number of units outstanding at the relevant time. The total increase (decrease) from operations is based on the weighted average number of units outstanding during the period.

³ Distributions were paid in cash, reinvested in additional units of the Portfolio, or both.

Ratios and Supplemental Data - Class F Units

	2020	2019	2018	2017	2016
Total Net Asset Value (000s)⁴	\$ 9,569	\$ 9,322	\$ 9,475	\$ 5,349	\$ 3,323
Number of Units Outstanding⁴	666,878	678,915	712,104	410,181	258,709
Management Expense Ratio⁵	0.93%	0.92%	0.91%	1.20%	1.16%
Management Expense Ratio before waivers or absorptions⁶	1.21%	1.21%	1.15%	1.20%	1.21%
Trading Expense Ratio⁷	0.05%	0.05%	0.05%	0.05%	0.06%
Portfolio Turnover Rate⁸	15.48%	13.97%	11.95%	10.91%	13.11%
Net Asset Value per Unit	\$ 14.35	\$ 13.73	\$ 13.31	\$ 13.04	\$ 12.84

⁴ This information is presented as at August 31 of the period(s) shown.

⁵ Management expense ratio is based on the total expenses of the fund (excluding commissions and other portfolio transaction costs), incurred by or allocated to a class of units for the period shown, expressed as an annualized percentage of the daily average net asset value of that class during the period.

⁶ The decision to waive and/or absorb management fees and operating expenses is at the discretion of the Manager. The practice of waiving and/or absorbing management fees and operating expenses may continue indefinitely or may be terminated at any time without notice to unitholders.

⁷ The trading expense ratio represents total commissions and other portfolio transaction costs before income taxes expressed as an annualized percentage of the daily average net asset value during the period.

⁸ The portfolio turnover rate indicates how actively the portfolio advisor manages the portfolio investments. A portfolio turnover rate of 100% is equivalent to a fund buying and selling all of the securities in its portfolio once in the course of the period. The higher a portfolio turnover rate in a period, the greater the trading costs payable by a fund in the period, and the greater the chance of an investor receiving taxable capital gains in the year. There is not necessarily a relationship between a high turnover rate and the performance of a fund.

Axiom Balanced Income Portfolio

The Portfolio's Net Assets per Unit¹ - Class FT4 Units

	2020	2019	2018 ^a
Net Assets, beginning of period	\$ 9.74	\$ 9.58	\$ 10.00 ^b
Increase (decrease) from operations:			
Total revenue	\$ 0.25	\$ 0.30	\$ 0.16
Total expenses	(0.09)	(0.09)	(0.05)
Realized gains (losses) for the period	0.27	0.28	0.12
Unrealized gains (losses) for the period	0.16	0.08	0.07
Total increase (decrease) from operations²	\$ 0.59	\$ 0.57	\$ 0.30
Distributions:			
From income (excluding dividends)	\$ 0.27	\$ 0.26	\$ 0.40
From dividends	0.04	0.03	0.22
From capital gains	—	0.11	0.37
Return of capital	0.07	—	—
Total Distributions³	\$ 0.38	\$ 0.40	\$ 0.99
Net Assets, end of period	\$ 9.95	\$ 9.74	\$ 9.58

^a Information presented is for the period from September 21, 2017 to August 31, 2018.

^b Initial offering price.

¹ This information is derived from the Portfolio's audited annual financial statements.

² Net assets and distributions are based on the actual number of units outstanding at the relevant time. The total increase (decrease) from operations is based on the weighted average number of units outstanding during the period.

³ Distributions were paid in cash, reinvested in additional units of the Portfolio, or both.

Ratios and Supplemental Data - Class FT4 Units

	2020	2019	2018 ^a
Total Net Asset Value (000s)⁴	\$ 1,050	\$ 1,043	\$ 962
Number of Units Outstanding⁴	105,560	107,080	100,361
Management Expense Ratio⁵	0.93%	0.93%	0.95%*
Management Expense Ratio before waivers or absorptions⁶	1.19%	1.19%	1.17%*
Trading Expense Ratio⁷	0.05%	0.05%	0.05%
Portfolio Turnover Rate⁸	15.48%	13.97%	11.95%
Net Asset Value per Unit	\$ 9.95	\$ 9.74	\$ 9.58

^a Information presented is for the period from September 21, 2017 to August 31, 2018.

* Ratio has been annualized.

⁴ This information is presented as at August 31 of the period(s) shown.

⁵ Management expense ratio is based on the total expenses of the fund (excluding commissions and other portfolio transaction costs), incurred by or allocated to a class of units for the period shown, expressed as an annualized percentage of the daily average net asset value of that class during the period.

⁶ The decision to waive and/or absorb management fees and operating expenses is at the discretion of the Manager. The practice of waiving and/or absorbing management fees and operating expenses may continue indefinitely or may be terminated at any time without notice to unitholders.

⁷ The trading expense ratio represents total commissions and other portfolio transaction costs before income taxes expressed as an annualized percentage of the daily average net asset value during the period.

⁸ The portfolio turnover rate indicates how actively the portfolio advisor manages the portfolio investments. A portfolio turnover rate of 100% is equivalent to a fund buying and selling all of the securities in its portfolio once in the course of the period. The higher a portfolio turnover rate in a period, the greater the trading costs payable by a fund in the period, and the greater the chance of an investor receiving taxable capital gains in the year. There is not necessarily a relationship between a high turnover rate and the performance of a fund.

Axiom Balanced Income Portfolio

The Portfolio's Net Assets per Unit¹ - Class FT6 Units

	2020	2019	2018 ^a
Net Assets, beginning of period	\$ 9.32	\$ 9.41	\$ 10.00 ^b
Increase (decrease) from operations:			
Total revenue	\$ 0.23	\$ 0.31	\$ 0.29
Total expenses	(0.08)	(0.09)	(0.09)
Realized gains (losses) for the period	0.14	0.18	0.28
Unrealized gains (losses) for the period	0.16	0.03	(0.01)
Total increase (decrease) from operations²	\$ 0.45	\$ 0.43	\$ 0.47
Distributions:			
From income (excluding dividends)	\$ 0.36	\$ 0.35	\$ 0.53
From dividends	—	—	0.22
From capital gains	—	—	0.36
Return of capital	0.18	0.19	—
Total Distributions³	\$ 0.54	\$ 0.54	\$ 1.11
Net Assets, end of period	\$ 9.21	\$ 9.32	\$ 9.41

^a Information presented is for the period from September 21, 2017 to August 31, 2018.

^b Initial offering price.

¹ This information is derived from the Portfolio's audited annual financial statements.

² Net assets and distributions are based on the actual number of units outstanding at the relevant time. The total increase (decrease) from operations is based on the weighted average number of units outstanding during the period.

³ Distributions were paid in cash, reinvested in additional units of the Portfolio, or both.

Ratios and Supplemental Data - Class FT6 Units

	2020	2019	2018 ^a
Total Net Asset Value (000s)⁴	\$ —	\$ —	\$ —
Number of Units Outstanding⁴	1	1	1
Management Expense Ratio⁵	0.95%	0.95%	0.95%*
Management Expense Ratio before waivers or absorptions⁶	1.12%	1.12%	1.12%*
Trading Expense Ratio⁷	0.05%	0.05%	0.05%
Portfolio Turnover Rate⁸	15.48%	13.97%	11.95%
Net Asset Value per Unit	\$ 9.21	\$ 9.32	\$ 9.41

^a Information presented is for the period from September 21, 2017 to August 31, 2018.

* Ratio has been annualized.

⁴ This information is presented as at August 31 of the period(s) shown.

⁵ Management expense ratio is based on the total expenses of the fund (excluding commissions and other portfolio transaction costs), incurred by or allocated to a class of units for the period shown, expressed as an annualized percentage of the daily average net asset value of that class during the period.

⁶ The decision to waive and/or absorb management fees and operating expenses is at the discretion of the Manager. The practice of waiving and/or absorbing management fees and operating expenses may continue indefinitely or may be terminated at any time without notice to unitholders.

⁷ The trading expense ratio represents total commissions and other portfolio transaction costs before income taxes expressed as an annualized percentage of the daily average net asset value during the period.

⁸ The portfolio turnover rate indicates how actively the portfolio advisor manages the portfolio investments. A portfolio turnover rate of 100% is equivalent to a fund buying and selling all of the securities in its portfolio once in the course of the period. The higher a portfolio turnover rate in a period, the greater the trading costs payable by a fund in the period, and the greater the chance of an investor receiving taxable capital gains in the year. There is not necessarily a relationship between a high turnover rate and the performance of a fund.

Axiom Balanced Income Portfolio

Management Fees

The Portfolio pays CAMI an annual management fee to cover the costs of managing the Portfolio. Management fees are based on the Portfolio's net asset value and are calculated daily and paid monthly. Management fees are paid to CAMI in consideration for providing, or arranging for the provision of, management, distribution, and portfolio advisory services. Advertising and promotional expenses, office overhead expenses related to the Manager's activities, and trailing commissions are paid by CAMI out of the management fees received from the Portfolio. The Portfolio is required to pay applicable taxes on the management fees paid to CAMI. Refer to the simplified prospectus for the annual management fee rate for each class of units. No management fees or incentive fees are payable by the Portfolio that, to a reasonable person, would duplicate a fee payable by an Underlying Fund for the same service.

The following table shows a breakdown of the services received in consideration of the management fees, as a percentage of the management fees collected from the Portfolio for the period ended August 31, 2020. These amounts do not include waived fees or absorbed expenses.

	Class A Units	Class T4 Units	Class T6 Units	Class T8 Units	Select Class Units	Select-T4 Class Units
Sales and trailing commissions paid to dealers	55.96%	46.22%	100.00%	54.27%	52.10%	38.50%
General administration, investment advice, and profit	44.04%	53.78%	0.00%	45.73%	47.90%	61.50%

	Select-T6 Class Units	Elite Class Units	Elite-T4 Class Units	Class F Units	Class FT4 Units	Class FT6 Units
Sales and trailing commissions paid to dealers	51.06%	46.95%	47.21%	0.00%	0.00%	0.00%
General administration, investment advice, and profit	48.94%	53.05%	52.79%	100.00%	100.00%	100.00%

Past Performance

The performance data provided assumes reinvestment of distributions only and does not take into account sales, redemption, distribution, or other optional charges payable by any unitholder that would have reduced returns. Past performance does not necessarily indicate how a fund will perform in the future.

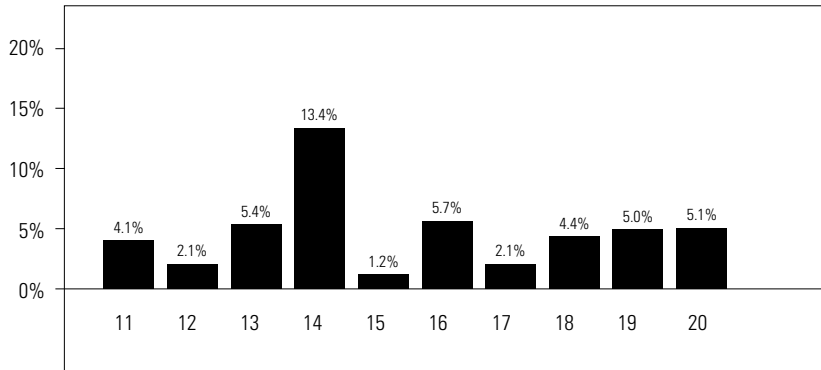
The Portfolio's returns are after the deduction of fees and expenses, and the difference in returns between classes of units is primarily due to differences in the management expense ratio. See *Financial Highlights* section for the management expense ratio.

Year-by-Year Returns

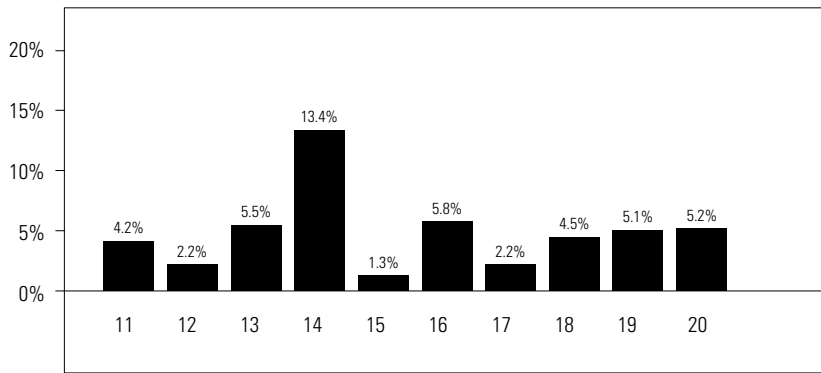
The bar charts show the annual performance of each class of units of the Portfolio for each of the periods shown, and illustrate how the performance has changed from period to period. The bar charts show, in percentage terms, how much an investment made on September 1 would have increased or decreased by August 31, unless otherwise indicated.

Axiom Balanced Income Portfolio

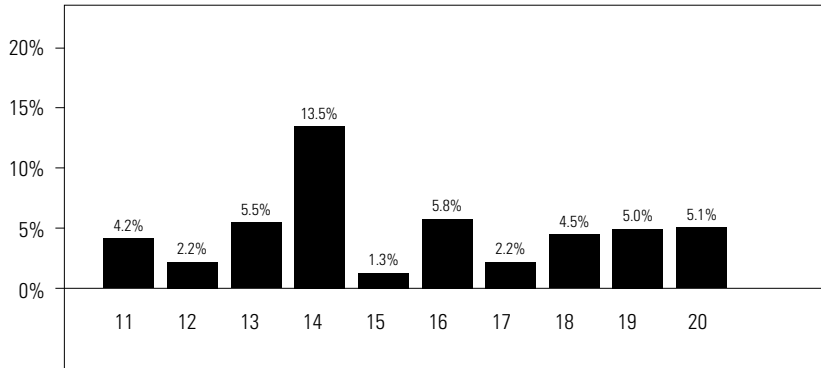
Class A Units



Class T4 Units

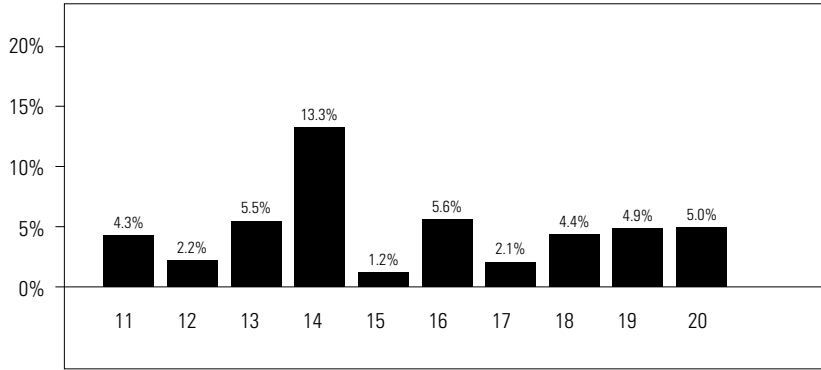


Class T6 Units

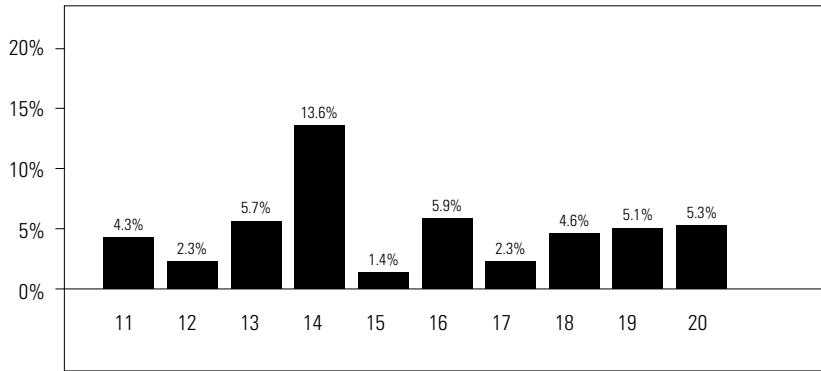


Axiom Balanced Income Portfolio

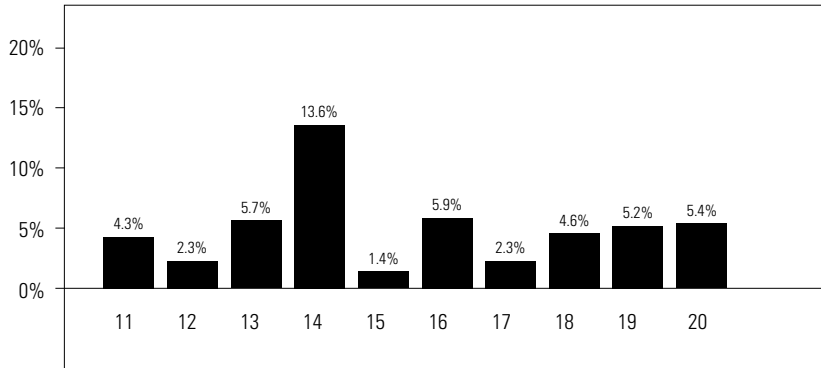
Class T8 Units



Select Class Units

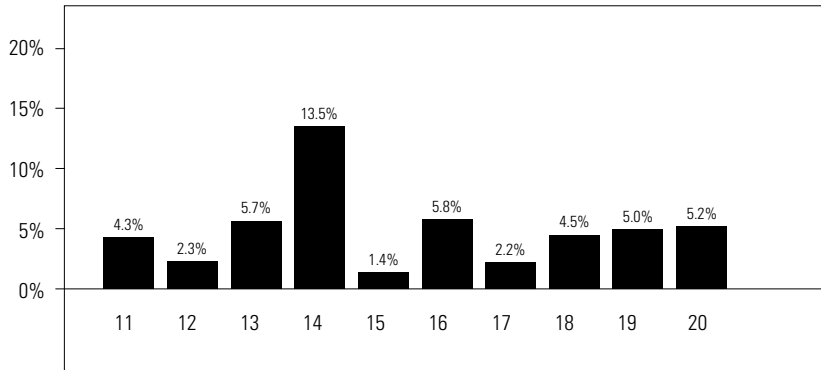


Select-T4 Class Units

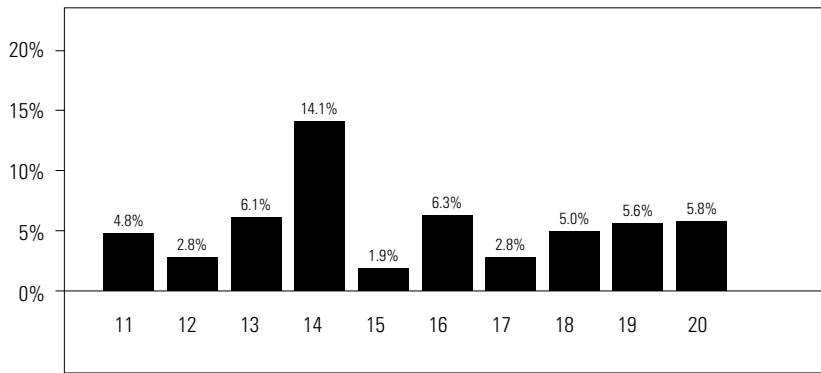


Axiom Balanced Income Portfolio

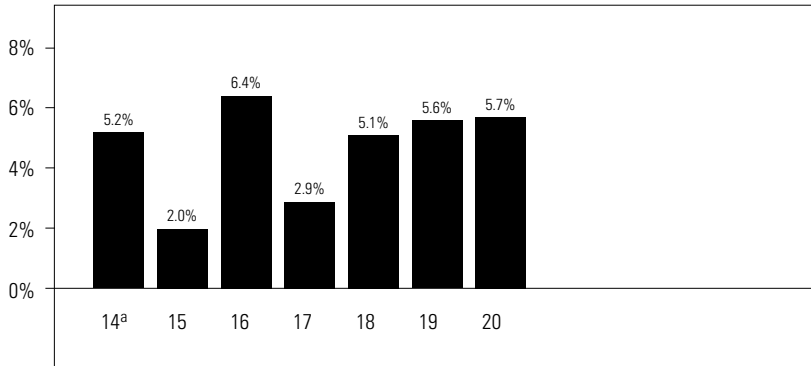
Select-T6 Class Units



Elite Class Units



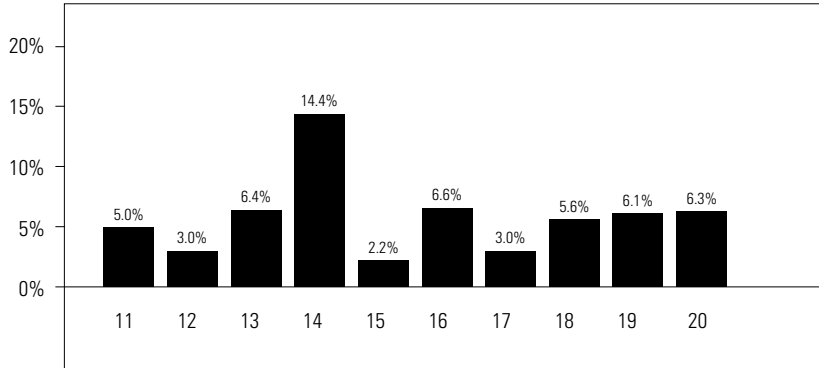
Elite-T4 Class Units



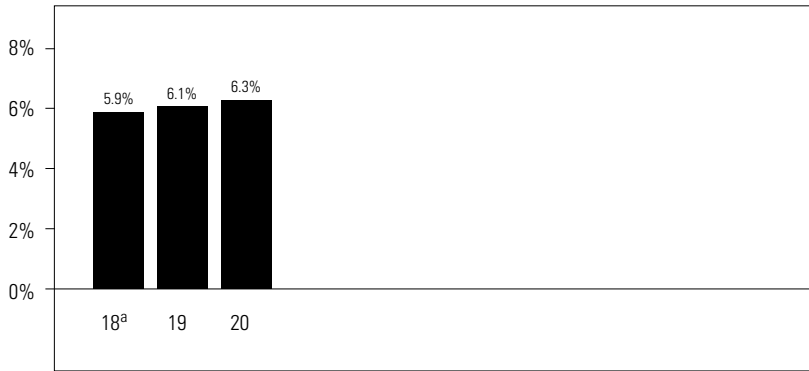
^a 2014 return is for the period from February 26, 2014 to August 31, 2014.

Axiom Balanced Income Portfolio

Class F Units

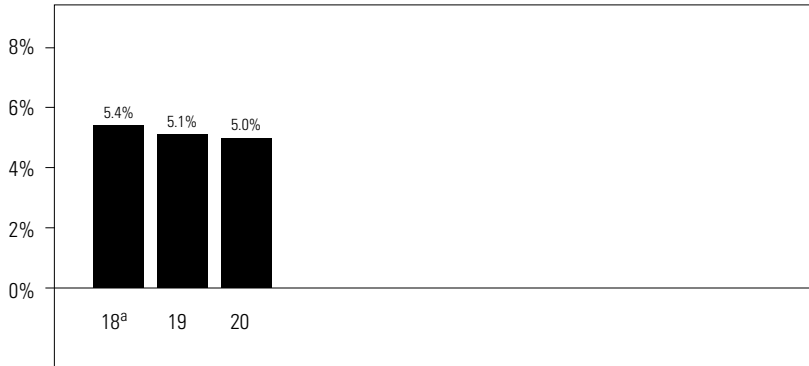


Class FT4 Units



^a 2018 return is for the period from September 21, 2017 to August 31, 2018.

Class FT6 Units



^a 2018 return is for the period from September 21, 2017 to August 31, 2018.

Annual Compound Returns

This table shows the annual compound return of each class of units of the Portfolio for each indicated period ended on August 31, 2020. The annual compound return is compared to the Portfolio's benchmarks.

The Portfolio's primary benchmark is the FTSE Canada Universe Bond Index.

The Portfolio's blended benchmark (*Blended Benchmark*) is comprised of the following:

- 60.0% FTSE Canada Universe Bond Index

Axiom Balanced Income Portfolio

- 12.2% S&P/TSX Composite Dividend Index
- 10.0% S&P 500 Index
- 8.8% S&P/TSX Composite Index
- 6.0% MSCI EAFE Index
- 3.0% MSCI Emerging Markets Index

	1 Year	3 Years	5 Years	10 Years*	or	Since Inception*	Inception Date
Class A units	5.1%	4.8%	4.4%	4.8%			March 15, 2005
FTSE Canada Universe Bond Index	5.8%	5.5%	4.1%	4.4%			
Blended Benchmark	6.7%	6.6%	6.0%	6.6%			
Class T4 units	5.2%	4.9%	4.5%	4.9%			June 23, 2009
FTSE Canada Universe Bond Index	5.8%	5.5%	4.1%	4.4%			
Blended Benchmark	6.7%	6.6%	6.0%	6.6%			
Class T6 units	5.1%	4.9%	4.5%	4.9%			August 14, 2009
FTSE Canada Universe Bond Index	5.8%	5.5%	4.1%	4.4%			
Blended Benchmark	6.7%	6.6%	6.0%	6.6%			
Class T8 units	5.0%	4.8%	4.4%	4.8%			July 29, 2009
FTSE Canada Universe Bond Index	5.8%	5.5%	4.1%	4.4%			
Blended Benchmark	6.7%	6.6%	6.0%	6.6%			
Select Class units	5.3%	5.0%	4.6%	5.0%			September 19, 2006
FTSE Canada Universe Bond Index	5.8%	5.5%	4.1%	4.4%			
Blended Benchmark	6.7%	6.6%	6.0%	6.6%			
Select-T4 Class units	5.4%	5.1%	4.7%	5.0%			March 16, 2010
FTSE Canada Universe Bond Index	5.8%	5.5%	4.1%	4.4%			
Blended Benchmark	6.7%	6.6%	6.0%	6.6%			
Select-T6 Class units	5.2%	4.9%	4.5%	4.9%			August 6, 2009
FTSE Canada Universe Bond Index	5.8%	5.5%	4.1%	4.4%			
Blended Benchmark	6.7%	6.6%	6.0%	6.6%			
Elite Class units	5.8%	5.5%	5.1%	5.5%			October 19, 2006
FTSE Canada Universe Bond Index	5.8%	5.5%	4.1%	4.4%			
Blended Benchmark	6.7%	6.6%	6.0%	6.6%			
Elite-T4 Class units	5.7%	5.5%	5.1%			5.1%	February 26, 2014
FTSE Canada Universe Bond Index	5.8%	5.5%	4.1%			4.5%	
Blended Benchmark	6.7%	6.6%	6.0%			6.1%	
Class F units	6.3%	6.0%	5.5%	5.8%			September 19, 2005
FTSE Canada Universe Bond Index	5.8%	5.5%	4.1%	4.4%			
Blended Benchmark	6.7%	6.6%	6.0%	6.6%			
Class FT4 units	6.3%					6.2%	September 21, 2017
FTSE Canada Universe Bond Index	5.8%					5.9%	
Blended Benchmark	6.7%					6.7%	

Axiom Balanced Income Portfolio

	1 Year	3 Years	5 Years	10 Years*	or	Since Inception*	Inception Date
Class FT6 units	5.0%					5.3%	September 21, 2017
FTSE Canada Universe Bond Index	5.8%					5.9%	
Blended Benchmark	6.7%					6.7%	

* If a class of units has been outstanding for less than 10 years, the annual compound return since inception is shown.

FTSE Canada Universe Bond Index is comprised of marketable Canadian bonds intended to reflect the performance of the broad Canadian investment-grade bond market. Returns are calculated daily and are weighted by market capitalization.

MSCI EAFE Index is a free float-adjusted market capitalization index of stocks of companies of developed market equity indices covering countries in Europe, Australia, and the Far East.

MSCI Emerging Markets Index is a free float-adjusted market capitalization index that is intended to represent the emerging countries equity market. It includes stocks from emerging countries in Asia, Latin America, Europe, Africa, and the Middle East.

S&P 500 Index is a capitalization-weighted index of 500 stocks, designed to measure performance of the broad U.S. economy representing all major industries.

S&P/TSX Composite Dividend Index aims to provide a broad-based benchmark of Canadian dividend-paying stocks. It includes all stocks in the S&P/TSX Composite Index with positive annual dividend yields as of the latest rebalancing of the S&P/TSX Composite Index.

S&P/TSX Composite Index is intended to represent the Canadian equity market and includes the largest companies listed on the TSX.

A discussion of the Portfolio's relative performance compared to its Blended Benchmark can be found in *Results of Operations*.

Summary of Investment Portfolio (as at August 31, 2020)

The Portfolio invests in units of its Underlying Funds. You can find the prospectus and additional information about the Underlying Funds by visiting www.sedar.com.

The summary of investment portfolio may change due to ongoing portfolio transactions of the investment fund. A quarterly update is available by visiting www.renaissanceinvestments.ca. The Top Positions table shows a fund's 25 largest positions. For funds with fewer than 25 positions in total, all positions are shown.

<i>Portfolio Breakdown</i>	<i>% of Net Asset</i>		<i>Top Positions</i>	<i>% of Net Asset</i>	
	<i>Value</i>	<i>Value</i>		<i>Value</i>	<i>Value</i>
Canadian Bond Mutual Funds	58.9		Renaissance Canadian Fixed Income Private Pool, Class 'O'	58.9	
Canadian Equity Mutual Funds	21.2		Renaissance Equity Income Private Pool, Class 'O'	12.3	
U.S. Equity Mutual Funds	10.1		Renaissance U.S. Equity Private Pool, Class 'O'	10.1	
International Equity Mutual Funds	6.1		Renaissance Canadian Equity Private Pool, Class 'O'	8.9	
Emerging Markets Equity Mutual Funds	3.1		Renaissance International Equity Private Pool, Class 'O'	6.1	
Cash	0.7		Renaissance Emerging Markets Equity Private Pool, Class 'O'	3.1	
Other Assets, less Liabilities	-0.1		Cash	0.7	
			Other Assets, less Liabilities	-0.1	

A note on forward-looking statements

The management report of fund performance may contain forward-looking statements. Forward-looking statements include statements that are predictive in nature, that depend upon or refer to future events or conditions, or that include words such as “expects”, “anticipates”, “intends”, “plans”, “believes”, “estimates”, or other similar wording. In addition, any statements that may be made concerning future performance, strategies, or prospects and possible future actions taken by the fund, are also forward-looking statements. Forward-looking statements are not guarantees of future performance. These statements involve known and unknown risks, uncertainties, and other factors that may cause the actual results and achievements of the fund to differ materially from those expressed or implied by such statements. Such factors include, but are not limited to: general economic, market, and business conditions; fluctuations in securities prices, interest rates, and foreign currency exchange rates; changes in government regulations; and catastrophic events.

The above list of important factors that may affect future results is not exhaustive. Before making any investment decisions, we encourage you to consider these and other factors carefully. CIBC Asset Management Inc. does not undertake, and specifically disclaims, any obligation to update or revise any forward-looking statements, whether as a result of new information, future developments, or otherwise prior to the release of the next management report of fund performance.



Renaissance Investments

1500 Robert-Bourassa Boulevard, Suite 800
Montreal, Quebec
H3A 3S6
1-888-888-3863

Website

www.renaissanceinvestments.ca

CIBC Asset Management Inc., the manager and trustee of the Axiom Portfolios, is a wholly-owned subsidiary of Canadian Imperial Bank of Commerce. Please read the Renaissance Investments family of funds, Axiom Portfolios and Renaissance Private Pools simplified prospectus before investing. To obtain a copy of the simplified prospectus, call 1-888-888-3863, email us at info@renaissanceinvestments.ca, or ask your advisor.

Axiom®, Axiom Portfolios® and Renaissance Investments® are registered trademarks of CIBC Asset Management Inc. Renaissance Investments is offered by CIBC Asset Management Inc.