

## Interim Management Report of Fund Performance

for the period ended February 29, 2020

All figures are reported in Canadian dollars unless otherwise noted.

This interim management report of fund performance contains financial highlights but does not contain either the interim financial report or annual financial statements of the investment fund. You can get a copy of the interim financial report or annual financial statements at your request, and at no cost, by calling toll-free at 1-888-888-FUND (3863), by writing to us at Renaissance Investments, 1500 Robert-Bourassa Boulevard, Suite 800, Montreal, QC, H3A 3S6, or by visiting our website at [www.renaissanceinvestments.ca](http://www.renaissanceinvestments.ca) or SEDAR at [www.sedar.com](http://www.sedar.com).

Unitholders may also contact us using one of these methods to request a copy of the investment fund's proxy voting policies and procedures, proxy voting disclosure record, or quarterly portfolio disclosure.

### Management Discussion of Fund Performance

#### Results of Operations

Renaissance Optimal Income Portfolio (the *Fund*) invests in a combination of direct investments in other mutual funds (individually, an *Underlying Fund*, and collectively, the *Underlying Funds*) which can be found in the Top Positions table of the Summary of Investment Portfolio. The Fund's portfolio advisor is CIBC Asset Management Inc. (CAMI, the *Manager* or *Portfolio Advisor*).

The commentary that follows provides a summary of the results of operations for the six-month period ended February 29, 2020. All dollar figures are expressed in thousands, unless otherwise indicated.

The Fund's net asset value decreased by 4% during the period, from \$2,240,725 as at August 31, 2019 to \$2,151,845 as at February 29, 2020. Net redemptions of \$112,439 were partially offset by positive investment performance, resulting in an overall decrease in net asset value.

Class A units of the Fund posted a return of 1.3% for the period. The Fund's primary benchmarks, the FTSE Canada Universe Bond Index and the S&P/TSX Composite Dividend Index (the *benchmarks*), returned 1.9% and 0.9%, respectively, for the same period. The Fund's blended benchmark (the *blended benchmark*) comprises 60% FTSE Canada Universe Bond Index, 25% S&P/TSX Composite Dividend Index and 15% MSCI World Index. The blended benchmark returned 1.8% for the same period. The blended benchmark closely reflects the asset classes in which the Fund invests, and is designed to provide a more useful comparative to the Fund's performance. The Fund's return is after the deduction of fees and expenses, unlike the benchmarks' returns. See *Past Performance* for the returns of other classes of units offered by the Fund.

During the period, the Bank of Canada (the *BoC*) held its target overnight interest rate steady at 1.75%, based on a robust labour market and strong inflation. However, the BoC became more cautious toward the end of the period as Canadian economic growth slowed and potential risks to the economy heightened. Canada's inflation rate

held firm at close to the BoC's 2% target, partly as a result of rising food prices.

The Canadian labour market was robust. The economy added jobs, while the unemployment rate remained close to 40-year lows. However, Canadian economic growth weakened, and business investment and exports both declined, as the Canadian economy was impacted by strikes and pipeline shutdowns.

Canadian fixed income assets posted positive returns, with higher-risk assets generally outperforming. Canadian federal bonds underperformed Canadian provincial bonds, and both underperformed Canadian corporate bonds.

In global fixed income markets, the U.S. Federal Reserve Board continued to lower its interest rate and resumed buying securities to grow its balance sheet. Recession concerns receded late in 2019 as economic growth improved and investors anticipated a reduction in trade frictions between the U.S. and China.

However, global recession concerns resurfaced in the final weeks of February 2020 as the spread of COVID-19 disrupted supply chains between China and the rest of the world. Financial markets reacted strongly to the potential disruption to economic growth, sending bond yields lower and credit spreads (the difference in yield between government and corporate bonds of similar maturity) wider.

Higher-quality global developed market bonds and other "safe haven" assets rebounded amid the uncertainty. Many emerging markets bond markets and currencies, given their close links to Chinese economic growth and export demand, declined through February. Several central banks stepped in with pre-emptive actions against potential COVID-19 fallout.

The London interbank offered rate (*LIBOR*) declined significantly amid negative sentiment and global central bank actions.

Similarly, in the Canadian equity market, the resumption of economic growth was beginning to take hold until COVID-19 began to dominate headlines and investor concerns. Commodities, including oil, copper

and iron ore, had a strong start to the period before reversing course amid demand concerns. The price of gold was strong, initially as a result of strong demand and a weaker U.S. dollar. Later, amid investor risk aversion and a “flight to safety,” gold prices remained strong.

Globally, the infrastructure sub-sector has less sensitivity to economic growth than broader equity markets, and is generally supported by lower bond yields. As a result, infrastructure assets performed well relative to global equities during the period. The U.K. general election result in December 2019 provided greater certainty around the U.K.’s exit from the European Union, and supported U.K. assets. It also removed the risk of nationalization of U.K. regulated assets and is expected to result in greater fiscal stimulus.

Renaissance High-Yield Bond Fund was the most significant detractor from the Fund’s performance relative to the blended benchmark, followed by Renaissance Global Bond Fund.

Renaissance Canadian Dividend Fund was the most significant contributor to the Fund’s performance relative to the blended benchmark, followed by Renaissance Global Infrastructure Fund and Renaissance Canadian Bond Fund.

#### **Recent Developments**

The composition of the Independent Review Committee (*IRC*) changed. Don Hunter and Merle Kriss retired effective April 26, 2020. David Forster and Deborah Leckman were appointed as members of the IRC effective April 27, 2020.

The outbreak of COVID-19 (the disease caused by a new coronavirus) in China in December 2019, and its subsequent spread and designation as a global pandemic, has caused a slowdown in global economic activity and sustained market volatility. This has impacted global markets, with the most significant valuation changes occurring since the end of the review period. This has affected, or could affect, the performance of the Fund in an adverse manner.

#### **Related Party Transactions**

CIBC and its affiliates have the following roles and responsibilities with respect to the Fund, and receive the fees described below in connection with their roles and responsibilities.

##### *Manager, Trustee, and Portfolio Advisor of the Fund*

CAMI, a wholly-owned subsidiary of CIBC, is the Fund’s Manager, Trustee, and Portfolio Advisor. As Manager, CAMI receives management fees with respect to the Fund’s day-to-day business and operations, calculated based on the net asset value of each respective class of units of the Fund as described in *Management Fees*. As Trustee, CAMI holds title to the Fund’s property (cash and securities) on behalf of its unitholders. As Portfolio Advisor, CAMI provides, or arranges to provide, investment advice and portfolio management services to the Fund. CAMI also compensates dealers in connection with their marketing activities regarding the Fund. From time to time, CAMI may invest in units of the Fund.

##### *Distributor*

Dealers and other firms sell units of the Fund to investors. These dealers and other firms include CAMI’s related dealers such as the CIBC Investor’s Edge discount brokerage division of CIBC Investor Services Inc. (*CIBC ISI*), the CIBC Imperial Service division of CIBC ISI, and the CIBC Wood Gundy division of CIBC World Markets Inc. (*CIBC WM*). CIBC ISI and CIBC WM are wholly-owned subsidiaries of CIBC.

CAMI may pay sales commissions and trailing commissions to these dealers and firms in connection with the sale of units of the Fund. These dealers and other firms may pay a portion of these sales commissions and trailing commissions to their advisors who sell units of the Fund to investors.

##### *Brokerage Arrangements and Soft Dollars*

The Portfolio Advisor makes decisions, including the selection of markets and dealers and the negotiation of commissions, with respect to the purchase and sale of portfolio securities, certain derivative products and the execution of portfolio transactions. Brokerage business may be allocated by the Portfolio Advisor to CIBC WM and CIBC World Markets Corp., each a subsidiary of CIBC. CIBC WM and CIBC World Markets Corp. may also earn spreads on the sale of fixed income securities, other securities, and certain derivative products to the Fund. A spread is the difference between the bid and ask prices for a security in the applicable marketplace, with respect to the execution of portfolio transactions. The spread will differ based upon various factors such as the nature and liquidity of the security.

Dealers, including CIBC WM and CIBC World Markets Corp., may furnish goods and services, other than order execution, when CAMI processes trades through them (referred to in the industry as “soft-dollar” arrangements). These goods and services are paid for with a portion of brokerage commissions and assist CAMI with investment decision-making services for the Fund or relate directly to the execution of portfolio transactions on behalf of the Fund.

The fees and spreads for services of the Custodian directly related to the execution of portfolio transactions by the Fund are paid by CAMI and/or dealer(s) directed by CAMI, up to the amount of the credits generated under soft dollar arrangements from trading on behalf of the Fund during that month.

In addition, the Manager may enter into commission recapture arrangements with certain dealers with respect to the Fund. Any commission recaptured will be paid to the Fund.

During the period, the Fund did not pay any brokerage commissions or other fees to CIBC WM or CIBC World Markets Corp. Spreads associated with fixed income and other securities are not ascertainable and, for that reason, cannot be included when determining these amounts.

##### *Fund Transactions*

The Fund may enter into the following transaction (the *Related Party Transaction*) in reliance on the standing instructions issued by the IRC:

- invest in or hold equity securities of CIBC or issuers related to the Portfolio Advisor;
- invest in or hold non-exchange-traded debt securities of CIBC or an issuer related to CIBC, with terms-to-maturity of 365 days or more, issued in a primary offering and in the secondary market;
- make an investment in the securities of an issuer for which CIBC WM, CIBC World Markets Corp., or any affiliate of CIBC (a Related Dealer) acts as an underwriter during the offering of the securities or at any time during the 60-day period following the completion of the offering of such securities (in the case of a “private placement” offering, in accordance with the exemptive relief order granted by the Canadian securities regulatory authorities and in accordance with the policies and procedures relating to such investment);
- purchase equity and debt securities from or sell them to a Related Dealer, where it is acting as principal;
- undertake currency and currency derivative transactions where a Related Dealer is the counterparty;
- purchase securities from or sell securities to another investment fund or a managed account managed by the Manager or an affiliate of the Manager; and
- engage in in-specie transfers by receiving portfolio securities from, or delivering portfolio securities to, a managed account or another investment fund managed by the Manager or an affiliate, in respect of a purchase or redemption of units of the Fund, subject to certain conditions.

At least annually, the IRC reviews the Related Party Transactions for which they have issued standing instructions. The IRC is required to advise the Canadian securities regulatory authorities, after a matter has been referred to or reported to it by the Manager, if it determines that an investment decision was not made in accordance with conditions imposed by securities legislation or the IRC in any Related Party Transactions requiring its approval.

#### *Custodian*

CIBC Mellon Trust Company is the custodian of the Fund (the *Custodian*). The Custodian holds all cash and securities for the Fund and ensures that those assets are kept separate from any other cash or securities that the custodian might be holding. The Custodian also provides other services to the Fund including record-keeping and processing of foreign exchange transactions. The fees and spreads for services of the Custodian directly related to the execution of portfolio transactions by the Fund are paid by CAMI and/or dealer(s) directed by CAMI, up to the amount of the credits generated under soft dollar arrangements from trading on behalf of the Fund during that month. All other fees and spreads for the services of the Custodian are paid by the Manager and charged to the Fund on a recoverable basis. CIBC owns a 50% interest in the Custodian.

#### *Service Provider*

CIBC Mellon Global Securities Services Company (*CIBC GSS*) provides certain services to the Fund, including securities lending,

fund accounting and reporting, and portfolio valuation. Such servicing fees are paid by the Manager and charged to the Fund on a recoverable basis. CIBC indirectly owns a 50% interest in CIBC GSS.

## Renaissance Optimal Income Portfolio

### Financial Highlights

The following tables show selected key financial information about the Fund and are intended to help you understand the Fund's financial performance for the period ended February 29, 2020 and August 31 of any other period(s) shown.

#### The Fund's Net Assets per Unit<sup>1</sup> - Class A Units

	2020	2019	2018	2017	2016	2015
<b>Net Assets, beginning of period</b>	\$ 9.83	\$ 9.74	\$ 10.28	\$ 10.43	\$ 10.26	\$ 10.62
<b>Increase (decrease) from operations:</b>						
Total revenue	\$ 0.16	\$ 0.35	\$ 0.39	\$ 0.37	\$ 0.35	\$ 0.36
Total expenses	(0.10)	(0.19)	(0.20)	(0.21)	(0.20)	(0.21)
Realized gains (losses) for the period	0.06	0.06	0.60	0.21	0.18	0.07
Unrealized gains (losses) for the period	0.01	0.21	(0.73)	(0.12)	0.24	(0.20)
<b>Total increase (decrease) from operations<sup>2</sup></b>	\$ 0.13	\$ 0.43	\$ 0.06	\$ 0.25	\$ 0.57	\$ 0.02
<b>Distributions:</b>						
From income (excluding dividends)	\$ 0.09	\$ 0.28	\$ 0.31	\$ 0.31	\$ 0.29	\$ 0.31
From dividends	0.02	0.02	0.02	0.02	0.03	0.03
From capital gains	—	0.03	0.29	—	—	—
Return of capital	0.08	0.05	—	0.08	0.09	0.07
<b>Total Distributions<sup>3</sup></b>	\$ 0.19	\$ 0.38	\$ 0.62	\$ 0.41	\$ 0.41	\$ 0.41
<b>Net Assets, end of period</b>	\$ 9.76	\$ 9.83	\$ 9.74	\$ 10.28	\$ 10.43	\$ 10.26

<sup>1</sup> This information is derived from the Fund's audited annual and unaudited interim financial statements.

<sup>2</sup> Net assets and distributions are based on the actual number of units outstanding at the relevant time. The total increase (decrease) from operations is based on the weighted average number of units outstanding during the period.

<sup>3</sup> Distributions were paid in cash, reinvested in additional units of the Fund, or both.

#### Ratios and Supplemental Data - Class A Units

	2020	2019	2018	2017	2016	2015
<b>Total Net Asset Value (000s)<sup>4</sup></b>	\$ 1,493,227	\$ 1,568,458	\$ 1,841,946	\$ 2,183,369	\$ 2,244,341	\$ 2,267,903
<b>Number of Units Outstanding<sup>4</sup></b>	152,966,930	159,629,441	189,130,060	212,381,033	215,183,685	220,984,024
<b>Management Expense Ratio<sup>5</sup></b>	1.98%*	1.98%	1.98%	1.98%	1.98%	1.98%
<b>Management Expense Ratio before waivers or absorptions<sup>6</sup></b>	2.12%*	2.13%	2.12%	2.13%	2.14%	2.13%
<b>Trading Expense Ratio<sup>7</sup></b>	0.02%*	0.03%	0.06%	0.08%	0.04%	0.05%
<b>Portfolio Turnover Rate<sup>8</sup></b>	2.86%	6.35%	9.47%	5.77%	6.41%	1.60%
<b>Net Asset Value per Unit</b>	\$ 9.76	\$ 9.83	\$ 9.74	\$ 10.28	\$ 10.43	\$ 10.26

\* Ratio has been annualized.

<sup>4</sup> This information is presented as at February 29, 2020 and August 31 of the period(s) shown.

<sup>5</sup> Management expense ratio is based on the total expenses of the fund (excluding commissions and other portfolio transaction costs), incurred by or allocated to a class of units for the period shown, expressed as an annualized percentage of the daily average net asset value of that class during the period.

<sup>6</sup> The decision to waive and/or absorb management fees and operating expenses is at the discretion of the Manager. The practice of waiving and/or absorbing management fees and operating expenses may continue indefinitely or may be terminated at any time without notice to unitholders.

<sup>7</sup> The trading expense ratio represents total commissions and other portfolio transaction costs before income taxes expressed as an annualized percentage of the daily average net asset value during the period. Spreads associated with fixed income securities trading are not ascertainable and, for that reason, are not included in the trading expense ratio calculation.

<sup>8</sup> The portfolio turnover rate indicates how actively the portfolio advisor and/or portfolio sub-advisor manages the portfolio investments. A portfolio turnover rate of 100% is equivalent to a fund buying and selling all of the securities in its portfolio once in the course of the period. The higher a portfolio turnover rate in a period, the greater the trading costs payable by a fund in the period, and the greater the chance of an investor receiving taxable capital gains in the year. There is not necessarily a relationship between a high turnover rate and the performance of a fund.

## Renaissance Optimal Income Portfolio

### The Fund's Net Assets per Unit<sup>1</sup> - Class T6 Units

	2020	2019	2018	2017	2016	2015
<b>Net Assets, beginning of period</b>	\$ 7.90	\$ 7.99	\$ 8.45	\$ 8.75	\$ 8.78	\$ 9.26
<b>Increase (decrease) from operations:</b>						
Total revenue	\$ 0.13	\$ 0.28	\$ 0.32	\$ 0.31	\$ 0.30	\$ 0.31
Total expenses	(0.08)	(0.15)	(0.16)	(0.17)	(0.17)	(0.18)
Realized gains (losses) for the period	0.05	0.05	0.49	0.18	0.15	0.06
Unrealized gains (losses) for the period	0.01	0.17	(0.60)	(0.09)	0.19	(0.16)
<b>Total increase (decrease) from operations<sup>2</sup></b>	\$ 0.11	\$ 0.35	\$ 0.05	\$ 0.23	\$ 0.47	\$ 0.03
<b>Distributions:</b>						
From income (excluding dividends)	\$ 0.10	\$ 0.32	\$ 0.37	\$ 0.37	\$ 0.37	\$ 0.40
From dividends	0.02	0.02	0.02	0.02	0.02	0.02
From capital gains	—	0.02	0.13	—	—	—
Return of capital	0.11	0.10	—	0.13	0.13	0.12
<b>Total Distributions<sup>3</sup></b>	\$ 0.23	\$ 0.46	\$ 0.52	\$ 0.52	\$ 0.52	\$ 0.54
<b>Net Assets, end of period</b>	\$ 7.78	\$ 7.90	\$ 7.99	\$ 8.45	\$ 8.75	\$ 8.78

<sup>1</sup> This information is derived from the Fund's audited annual and unaudited interim financial statements.

<sup>2</sup> Net assets and distributions are based on the actual number of units outstanding at the relevant time. The total increase (decrease) from operations is based on the weighted average number of units outstanding during the period.

<sup>3</sup> Distributions were paid in cash, reinvested in additional units of the Fund, or both.

### Ratios and Supplemental Data - Class T6 Units

	2020	2019	2018	2017	2016	2015
<b>Total Net Asset Value (000s)<sup>4</sup></b>	\$ 65,958	\$ 70,298	\$ 85,288	\$ 98,426	\$ 115,150	\$ 122,871
<b>Number of Units Outstanding<sup>4</sup></b>	8,478,563	8,895,483	10,676,297	11,650,325	13,165,215	13,994,510
<b>Management Expense Ratio<sup>5</sup></b>	1.95%*	1.95%	1.94%	1.95%	1.95%	1.95%
<b>Management Expense Ratio before waivers or absorptions<sup>6</sup></b>	2.13%*	2.15%	2.12%	2.12%	2.13%	2.12%
<b>Trading Expense Ratio<sup>7</sup></b>	0.02%*	0.03%	0.06%	0.08%	0.04%	0.05%
<b>Portfolio Turnover Rate<sup>8</sup></b>	2.86%	6.35%	9.47%	5.77%	6.41%	1.60%
<b>Net Asset Value per Unit</b>	\$ 7.78	\$ 7.90	\$ 7.99	\$ 8.45	\$ 8.75	\$ 8.78

\* Ratio has been annualized.

<sup>4</sup> This information is presented as at February 29, 2020 and August 31 of the period(s) shown.

<sup>5</sup> Management expense ratio is based on the total expenses of the fund (excluding commissions and other portfolio transaction costs), incurred by or allocated to a class of units for the period shown, expressed as an annualized percentage of the daily average net asset value of that class during the period.

<sup>6</sup> The decision to waive and/or absorb management fees and operating expenses is at the discretion of the Manager. The practice of waiving and/or absorbing management fees and operating expenses may continue indefinitely or may be terminated at any time without notice to unitholders.

<sup>7</sup> The trading expense ratio represents total commissions and other portfolio transaction costs before income taxes expressed as an annualized percentage of the daily average net asset value during the period. Spreads associated with fixed income securities trading are not ascertainable and, for that reason, are not included in the trading expense ratio calculation.

<sup>8</sup> The portfolio turnover rate indicates how actively the portfolio advisor and/or portfolio sub-advisor manages the portfolio investments. A portfolio turnover rate of 100% is equivalent to a fund buying and selling all of the securities in its portfolio once in the course of the period. The higher a portfolio turnover rate in a period, the greater the trading costs payable by a fund in the period, and the greater the chance of an investor receiving taxable capital gains in the year. There is not necessarily a relationship between a high turnover rate and the performance of a fund.

## Renaissance Optimal Income Portfolio

### The Fund's Net Assets per Unit<sup>1</sup> - Class T8 Units

	2020	2019	2018	2017	2016	2015
<b>Net Assets, beginning of period</b>	\$ 6.18	\$ 6.39	\$ 6.89	\$ 7.28	\$ 7.46	\$ 8.04
<b>Increase (decrease) from operations:</b>						
Total revenue	\$ 0.10	\$ 0.23	\$ 0.26	\$ 0.25	\$ 0.25	\$ 0.27
Total expenses	(0.06)	(0.12)	(0.13)	(0.14)	(0.14)	(0.15)
Realized gains (losses) for the period	0.03	0.04	0.40	0.15	0.13	0.05
Unrealized gains (losses) for the period	0.01	0.13	(0.49)	(0.08)	0.17	(0.13)
<b>Total increase (decrease) from operations<sup>2</sup></b>	\$ 0.08	\$ 0.28	\$ 0.04	\$ 0.18	\$ 0.41	\$ 0.04
<b>Distributions:</b>						
From income (excluding dividends)	\$ 0.10	\$ 0.33	\$ 0.39	\$ 0.40	\$ 0.40	\$ 0.44
From dividends	0.01	0.02	0.01	0.02	0.02	0.02
From capital gains	—	0.02	0.07	—	—	—
Return of capital	0.13	0.13	0.08	0.15	0.17	0.16
<b>Total Distributions<sup>3</sup></b>	\$ 0.24	\$ 0.50	\$ 0.55	\$ 0.57	\$ 0.59	\$ 0.62
<b>Net Assets, end of period</b>	\$ 6.02	\$ 6.18	\$ 6.39	\$ 6.89	\$ 7.28	\$ 7.46

<sup>1</sup> This information is derived from the Fund's audited annual and unaudited interim financial statements.

<sup>2</sup> Net assets and distributions are based on the actual number of units outstanding at the relevant time. The total increase (decrease) from operations is based on the weighted average number of units outstanding during the period.

<sup>3</sup> Distributions were paid in cash, reinvested in additional units of the Fund, or both.

### Ratios and Supplemental Data - Class T8 Units

	2020	2019	2018	2017	2016	2015
<b>Total Net Asset Value (000s)<sup>4</sup></b>	\$ 24,408	\$ 26,918	\$ 31,741	\$ 45,437	\$ 51,091	\$ 50,712
<b>Number of Units Outstanding<sup>4</sup></b>	4,054,553	4,354,188	4,969,350	6,597,705	7,021,118	6,797,476
<b>Management Expense Ratio<sup>5</sup></b>	1.98%*	1.98%	1.98%	1.97%	1.97%	1.97%
<b>Management Expense Ratio before waivers or absorptions<sup>6</sup></b>	2.14%*	2.16%	2.14%	2.14%	2.14%	2.13%
<b>Trading Expense Ratio<sup>7</sup></b>	0.02%*	0.03%	0.06%	0.08%	0.04%	0.05%
<b>Portfolio Turnover Rate<sup>8</sup></b>	2.86%	6.35%	9.47%	5.77%	6.41%	1.60%
<b>Net Asset Value per Unit</b>	\$ 6.02	\$ 6.18	\$ 6.39	\$ 6.89	\$ 7.28	\$ 7.46

\* Ratio has been annualized.

<sup>4</sup> This information is presented as at February 29, 2020 and August 31 of the period(s) shown.

<sup>5</sup> Management expense ratio is based on the total expenses of the fund (excluding commissions and other portfolio transaction costs), incurred by or allocated to a class of units for the period shown, expressed as an annualized percentage of the daily average net asset value of that class during the period.

<sup>6</sup> The decision to waive and/or absorb management fees and operating expenses is at the discretion of the Manager. The practice of waiving and/or absorbing management fees and operating expenses may continue indefinitely or may be terminated at any time without notice to unitholders.

<sup>7</sup> The trading expense ratio represents total commissions and other portfolio transaction costs before income taxes expressed as an annualized percentage of the daily average net asset value during the period. Spreads associated with fixed income securities trading are not ascertainable and, for that reason, are not included in the trading expense ratio calculation.

<sup>8</sup> The portfolio turnover rate indicates how actively the portfolio advisor and/or portfolio sub-advisor manages the portfolio investments. A portfolio turnover rate of 100% is equivalent to a fund buying and selling all of the securities in its portfolio once in the course of the period. The higher a portfolio turnover rate in a period, the greater the trading costs payable by a fund in the period, and the greater the chance of an investor receiving taxable capital gains in the year. There is not necessarily a relationship between a high turnover rate and the performance of a fund.

## Renaissance Optimal Income Portfolio

### The Fund's Net Assets per Unit<sup>1</sup> - Select Class Units

	2020	2019	2018	2017	2016	2015
<b>Net Assets, beginning of period</b>	\$ 11.16	\$ 11.03	\$ 11.60	\$ 11.74	\$ 11.51	\$ 11.88
<b>Increase (decrease) from operations:</b>						
Total revenue	\$ 0.19	\$ 0.40	\$ 0.44	\$ 0.42	\$ 0.40	\$ 0.41
Total expenses	(0.09)	(0.18)	(0.19)	(0.20)	(0.19)	(0.20)
Realized gains (losses) for the period	0.06	0.07	0.70	0.24	0.19	0.07
Unrealized gains (losses) for the period	0.01	0.23	(0.85)	(0.13)	0.31	(0.24)
<b>Total increase (decrease) from operations<sup>2</sup></b>	\$ 0.17	\$ 0.52	\$ 0.10	\$ 0.33	\$ 0.71	\$ 0.04
<b>Distributions:</b>						
From income (excluding dividends)	\$ 0.10	\$ 0.32	\$ 0.35	\$ 0.35	\$ 0.34	\$ 0.36
From dividends	0.04	0.03	0.03	0.03	0.04	0.03
From capital gains	—	0.03	0.31	—	—	—
Return of capital	0.07	0.05	—	0.08	0.08	0.07
<b>Total Distributions<sup>3</sup></b>	\$ 0.21	\$ 0.43	\$ 0.69	\$ 0.46	\$ 0.46	\$ 0.46
<b>Net Assets, end of period</b>	\$ 11.10	\$ 11.16	\$ 11.03	\$ 11.60	\$ 11.74	\$ 11.51

<sup>1</sup> This information is derived from the Fund's audited annual and unaudited interim financial statements.

<sup>2</sup> Net assets and distributions are based on the actual number of units outstanding at the relevant time. The total increase (decrease) from operations is based on the weighted average number of units outstanding during the period.

<sup>3</sup> Distributions were paid in cash, reinvested in additional units of the Fund, or both.

### Ratios and Supplemental Data - Select Class Units

	2020	2019	2018	2017	2016	2015
<b>Total Net Asset Value (000s)<sup>4</sup></b>	\$ 96,057	\$ 104,718	\$ 130,898	\$ 178,758	\$ 136,632	\$ 123,624
<b>Number of Units Outstanding<sup>4</sup></b>	8,653,945	9,387,977	11,871,849	15,409,785	11,639,582	10,737,922
<b>Management Expense Ratio<sup>5</sup></b>	1.69%*	1.69%	1.69%	1.68%	1.68%	1.68%
<b>Management Expense Ratio before waivers or absorptions<sup>6</sup></b>	1.90%*	1.90%	1.90%	1.89%	1.90%	1.90%
<b>Trading Expense Ratio<sup>7</sup></b>	0.02%*	0.03%	0.06%	0.08%	0.04%	0.05%
<b>Portfolio Turnover Rate<sup>8</sup></b>	2.86%	6.35%	9.47%	5.77%	6.41%	1.60%
<b>Net Asset Value per Unit</b>	\$ 11.10	\$ 11.16	\$ 11.03	\$ 11.60	\$ 11.74	\$ 11.51

\* Ratio has been annualized.

<sup>4</sup> This information is presented as at February 29, 2020 and August 31 of the period(s) shown.

<sup>5</sup> Management expense ratio is based on the total expenses of the fund (excluding commissions and other portfolio transaction costs), incurred by or allocated to a class of units for the period shown, expressed as an annualized percentage of the daily average net asset value of that class during the period.

<sup>6</sup> The decision to waive and/or absorb management fees and operating expenses is at the discretion of the Manager. The practice of waiving and/or absorbing management fees and operating expenses may continue indefinitely or may be terminated at any time without notice to unitholders.

<sup>7</sup> The trading expense ratio represents total commissions and other portfolio transaction costs before income taxes expressed as an annualized percentage of the daily average net asset value during the period. Spreads associated with fixed income securities trading are not ascertainable and, for that reason, are not included in the trading expense ratio calculation.

<sup>8</sup> The portfolio turnover rate indicates how actively the portfolio advisor and/or portfolio sub-advisor manages the portfolio investments. A portfolio turnover rate of 100% is equivalent to a fund buying and selling all of the securities in its portfolio once in the course of the period. The higher a portfolio turnover rate in a period, the greater the trading costs payable by a fund in the period, and the greater the chance of an investor receiving taxable capital gains in the year. There is not necessarily a relationship between a high turnover rate and the performance of a fund.

## Renaissance Optimal Income Portfolio

### The Fund's Net Assets per Unit<sup>1</sup> - Select-T6 Class Units

	2020	2019	2018	2017	2016	2015
<b>Net Assets, beginning of period</b>	\$ 9.30	\$ 9.39	\$ 9.92	\$ 10.25	\$ 10.27	\$ 10.81
<b>Increase (decrease) from operations:</b>						
Total revenue	\$ 0.16	\$ 0.33	\$ 0.38	\$ 0.37	\$ 0.35	\$ 0.37
Total expenses	(0.08)	(0.16)	(0.17)	(0.18)	(0.18)	(0.19)
Realized gains (losses) for the period	0.05	0.06	0.57	0.22	0.18	0.06
Unrealized gains (losses) for the period	—	0.18	(0.69)	(0.11)	0.19	(0.20)
<b>Total increase (decrease) from operations<sup>2</sup></b>	\$ 0.13	\$ 0.41	\$ 0.09	\$ 0.30	\$ 0.54	\$ 0.04
<b>Distributions:</b>						
From income (excluding dividends)	\$ 0.12	\$ 0.38	\$ 0.43	\$ 0.43	\$ 0.43	\$ 0.46
From dividends	0.03	0.03	0.03	0.03	0.03	0.03
From capital gains	—	0.03	0.17	—	—	—
Return of capital	0.12	0.11	—	0.14	0.15	0.14
<b>Total Distributions<sup>3</sup></b>	\$ 0.27	\$ 0.55	\$ 0.63	\$ 0.60	\$ 0.61	\$ 0.63
<b>Net Assets, end of period</b>	\$ 9.16	\$ 9.30	\$ 9.39	\$ 9.92	\$ 10.25	\$ 10.27

<sup>1</sup> This information is derived from the Fund's audited annual and unaudited interim financial statements.

<sup>2</sup> Net assets and distributions are based on the actual number of units outstanding at the relevant time. The total increase (decrease) from operations is based on the weighted average number of units outstanding during the period.

<sup>3</sup> Distributions were paid in cash, reinvested in additional units of the Fund, or both.

### Ratios and Supplemental Data - Select-T6 Class Units

	2020	2019	2018	2017	2016	2015
<b>Total Net Asset Value (000s)<sup>4</sup></b>	\$ 6,836	\$ 7,309	\$ 9,968	\$ 12,711	\$ 11,105	\$ 12,726
<b>Number of Units Outstanding<sup>4</sup></b>	746,071	785,915	1,062,140	1,280,717	1,083,571	1,239,596
<b>Management Expense Ratio<sup>5</sup></b>	1.75%*	1.75%	1.74%	1.74%	1.75%	1.76%
<b>Management Expense Ratio before waivers or absorptions<sup>6</sup></b>	1.91%*	1.92%	1.90%	1.90%	1.92%	1.93%
<b>Trading Expense Ratio<sup>7</sup></b>	0.02%*	0.03%	0.06%	0.08%	0.04%	0.05%
<b>Portfolio Turnover Rate<sup>8</sup></b>	2.86%	6.35%	9.47%	5.77%	6.41%	1.60%
<b>Net Asset Value per Unit</b>	\$ 9.16	\$ 9.30	\$ 9.39	\$ 9.92	\$ 10.25	\$ 10.27

\* Ratio has been annualized.

<sup>4</sup> This information is presented as at February 29, 2020 and August 31 of the period(s) shown.

<sup>5</sup> Management expense ratio is based on the total expenses of the fund (excluding commissions and other portfolio transaction costs), incurred by or allocated to a class of units for the period shown, expressed as an annualized percentage of the daily average net asset value of that class during the period.

<sup>6</sup> The decision to waive and/or absorb management fees and operating expenses is at the discretion of the Manager. The practice of waiving and/or absorbing management fees and operating expenses may continue indefinitely or may be terminated at any time without notice to unitholders.

<sup>7</sup> The trading expense ratio represents total commissions and other portfolio transaction costs before income taxes expressed as an annualized percentage of the daily average net asset value during the period. Spreads associated with fixed income securities trading are not ascertainable and, for that reason, are not included in the trading expense ratio calculation.

<sup>8</sup> The portfolio turnover rate indicates how actively the portfolio advisor and/or portfolio sub-advisor manages the portfolio investments. A portfolio turnover rate of 100% is equivalent to a fund buying and selling all of the securities in its portfolio once in the course of the period. The higher a portfolio turnover rate in a period, the greater the trading costs payable by a fund in the period, and the greater the chance of an investor receiving taxable capital gains in the year. There is not necessarily a relationship between a high turnover rate and the performance of a fund.



## Renaissance Optimal Income Portfolio

### The Fund's Net Assets per Unit<sup>1</sup> - Select-T8 Class Units

	2020	2019	2018	2017	2016	2015
<b>Net Assets, beginning of period</b>	\$ 7.70	\$ 7.93	\$ 8.53	\$ 8.99	\$ 9.20	\$ 9.89
<b>Increase (decrease) from operations:</b>						
Total revenue	\$ 0.13	\$ 0.28	\$ 0.32	\$ 0.31	\$ 0.31	\$ 0.33
Total expenses	(0.07)	(0.13)	(0.14)	(0.15)	(0.16)	(0.17)
Realized gains (losses) for the period	0.04	0.05	0.53	0.17	0.16	0.06
Unrealized gains (losses) for the period	0.02	0.18	(0.64)	(0.06)	0.16	(0.18)
<b>Total increase (decrease) from operations<sup>2</sup></b>	\$ 0.12	\$ 0.38	\$ 0.07	\$ 0.27	\$ 0.47	\$ 0.04
<b>Distributions:</b>						
From income (excluding dividends)	\$ 0.12	\$ 0.43	\$ 0.49	\$ 0.49	\$ 0.51	\$ 0.54
From dividends	0.02	0.02	0.02	0.02	0.03	0.03
From capital gains	—	0.02	0.05	—	—	—
Return of capital	0.16	0.15	0.12	0.19	0.20	0.19
<b>Total Distributions<sup>3</sup></b>	\$ 0.30	\$ 0.62	\$ 0.68	\$ 0.70	\$ 0.74	\$ 0.76
<b>Net Assets, end of period</b>	\$ 7.51	\$ 7.70	\$ 7.93	\$ 8.53	\$ 8.99	\$ 9.20

<sup>1</sup> This information is derived from the Fund's audited annual and unaudited interim financial statements.

<sup>2</sup> Net assets and distributions are based on the actual number of units outstanding at the relevant time. The total increase (decrease) from operations is based on the weighted average number of units outstanding during the period.

<sup>3</sup> Distributions were paid in cash, reinvested in additional units of the Fund, or both.

### Ratios and Supplemental Data - Select-T8 Class Units

	2020	2019	2018	2017	2016	2015
<b>Total Net Asset Value (000s)<sup>4</sup></b>	\$ 1,714	\$ 2,188	\$ 3,020	\$ 6,593	\$ 6,847	\$ 9,474
<b>Number of Units Outstanding<sup>4</sup></b>	228,391	284,346	381,011	773,176	761,589	1,029,509
<b>Management Expense Ratio<sup>5</sup></b>	1.73%*	1.73%	1.74%	1.75%	1.75%	1.74%
<b>Management Expense Ratio before waivers or absorptions<sup>6</sup></b>	1.89%*	1.90%	1.91%	1.92%	1.92%	1.91%
<b>Trading Expense Ratio<sup>7</sup></b>	0.02%*	0.03%	0.06%	0.08%	0.04%	0.05%
<b>Portfolio Turnover Rate<sup>8</sup></b>	2.86%	6.35%	9.47%	5.77%	6.41%	1.60%
<b>Net Asset Value per Unit</b>	\$ 7.51	\$ 7.70	\$ 7.93	\$ 8.53	\$ 8.99	\$ 9.20

\* Ratio has been annualized.

<sup>4</sup> This information is presented as at February 29, 2020 and August 31 of the period(s) shown.

<sup>5</sup> Management expense ratio is based on the total expenses of the fund (excluding commissions and other portfolio transaction costs), incurred by or allocated to a class of units for the period shown, expressed as an annualized percentage of the daily average net asset value of that class during the period.

<sup>6</sup> The decision to waive and/or absorb management fees and operating expenses is at the discretion of the Manager. The practice of waiving and/or absorbing management fees and operating expenses may continue indefinitely or may be terminated at any time without notice to unitholders.

<sup>7</sup> The trading expense ratio represents total commissions and other portfolio transaction costs before income taxes expressed as an annualized percentage of the daily average net asset value during the period. Spreads associated with fixed income securities trading are not ascertainable and, for that reason, are not included in the trading expense ratio calculation.

<sup>8</sup> The portfolio turnover rate indicates how actively the portfolio advisor and/or portfolio sub-advisor manages the portfolio investments. A portfolio turnover rate of 100% is equivalent to a fund buying and selling all of the securities in its portfolio once in the course of the period. The higher a portfolio turnover rate in a period, the greater the trading costs payable by a fund in the period, and the greater the chance of an investor receiving taxable capital gains in the year. There is not necessarily a relationship between a high turnover rate and the performance of a fund.

## Renaissance Optimal Income Portfolio

### The Fund's Net Assets per Unit<sup>1</sup> - Elite Class Units

	2020	2019	2018	2017	2016	2015
<b>Net Assets, beginning of period</b>	\$ 11.60	\$ 11.42	\$ 11.89	\$ 12.00	\$ 11.73	\$ 12.06
<b>Increase (decrease) from operations:</b>						
Total revenue	\$ 0.19	\$ 0.41	\$ 0.46	\$ 0.43	\$ 0.41	\$ 0.41
Total expenses	(0.08)	(0.15)	(0.16)	(0.16)	(0.16)	(0.16)
Realized gains (losses) for the period	0.07	0.07	0.71	0.24	0.20	0.07
Unrealized gains (losses) for the period	—	0.22	(0.87)	(0.12)	0.26	(0.23)
<b>Total increase (decrease) from operations<sup>2</sup></b>	\$ 0.18	\$ 0.55	\$ 0.14	\$ 0.39	\$ 0.71	\$ 0.09
<b>Distributions:</b>						
From income (excluding dividends)	\$ 0.11	\$ 0.33	\$ 0.37	\$ 0.37	\$ 0.35	\$ 0.36
From dividends	0.05	0.04	0.04	0.04	0.05	0.04
From capital gains	—	0.03	0.22	—	—	—
Return of capital	0.06	0.04	—	0.07	0.07	0.06
<b>Total Distributions<sup>3</sup></b>	\$ 0.22	\$ 0.44	\$ 0.63	\$ 0.48	\$ 0.47	\$ 0.46
<b>Net Assets, end of period</b>	\$ 11.56	\$ 11.60	\$ 11.42	\$ 11.89	\$ 12.00	\$ 11.73

<sup>1</sup> This information is derived from the Fund's audited annual and unaudited interim financial statements.

<sup>2</sup> Net assets and distributions are based on the actual number of units outstanding at the relevant time. The total increase (decrease) from operations is based on the weighted average number of units outstanding during the period.

<sup>3</sup> Distributions were paid in cash, reinvested in additional units of the Fund, or both.

### Ratios and Supplemental Data - Elite Class Units

	2020	2019	2018	2017	2016	2015
<b>Total Net Asset Value (000s)<sup>4</sup></b>	\$ 78,756	\$ 79,993	\$ 107,658	\$ 138,101	\$ 102,397	\$ 103,365
<b>Number of Units Outstanding<sup>4</sup></b>	6,812,879	6,897,362	9,424,850	11,613,517	8,535,699	8,813,614
<b>Management Expense Ratio<sup>5</sup></b>	1.37%*	1.37%	1.37%	1.37%	1.37%	1.37%
<b>Management Expense Ratio before waivers or absorptions<sup>6</sup></b>	1.67%*	1.68%	1.67%	1.68%	1.67%	1.69%
<b>Trading Expense Ratio<sup>7</sup></b>	0.02%*	0.03%	0.06%	0.08%	0.04%	0.05%
<b>Portfolio Turnover Rate<sup>8</sup></b>	2.86%	6.35%	9.47%	5.77%	6.41%	1.60%
<b>Net Asset Value per Unit</b>	\$ 11.56	\$ 11.60	\$ 11.42	\$ 11.89	\$ 12.00	\$ 11.73

\* Ratio has been annualized.

<sup>4</sup> This information is presented as at February 29, 2020 and August 31 of the period(s) shown.

<sup>5</sup> Management expense ratio is based on the total expenses of the fund (excluding commissions and other portfolio transaction costs), incurred by or allocated to a class of units for the period shown, expressed as an annualized percentage of the daily average net asset value of that class during the period.

<sup>6</sup> The decision to waive and/or absorb management fees and operating expenses is at the discretion of the Manager. The practice of waiving and/or absorbing management fees and operating expenses may continue indefinitely or may be terminated at any time without notice to unitholders.

<sup>7</sup> The trading expense ratio represents total commissions and other portfolio transaction costs before income taxes expressed as an annualized percentage of the daily average net asset value during the period. Spreads associated with fixed income securities trading are not ascertainable and, for that reason, are not included in the trading expense ratio calculation.

<sup>8</sup> The portfolio turnover rate indicates how actively the portfolio advisor and/or portfolio sub-advisor manages the portfolio investments. A portfolio turnover rate of 100% is equivalent to a fund buying and selling all of the securities in its portfolio once in the course of the period. The higher a portfolio turnover rate in a period, the greater the trading costs payable by a fund in the period, and the greater the chance of an investor receiving taxable capital gains in the year. There is not necessarily a relationship between a high turnover rate and the performance of a fund.

## Renaissance Optimal Income Portfolio

### The Fund's Net Assets per Unit<sup>1</sup> - Elite-T6 Class Units

	2020	2019	2018	2017	2016	2015
<b>Net Assets, beginning of period</b>	\$ 9.55	\$ 9.60	\$ 10.29	\$ 10.59	\$ 10.57	\$ 11.09
<b>Increase (decrease) from operations:</b>						
Total revenue	\$ 0.16	\$ 0.34	\$ 0.39	\$ 0.38	\$ 0.36	\$ 0.37
Total expenses	(0.07)	(0.13)	(0.14)	(0.14)	(0.14)	(0.15)
Realized gains (losses) for the period	0.05	0.06	0.60	0.20	0.18	0.07
Unrealized gains (losses) for the period	—	0.24	(0.72)	(0.11)	0.29	(0.17)
<b>Total increase (decrease) from operations<sup>2</sup></b>	\$ 0.14	\$ 0.51	\$ 0.13	\$ 0.33	\$ 0.69	\$ 0.12
<b>Distributions:</b>						
From income (excluding dividends)	\$ 0.13	\$ 0.39	\$ 0.45	\$ 0.45	\$ 0.45	\$ 0.48
From dividends	0.04	0.04	0.03	0.04	0.04	0.03
From capital gains	—	0.03	0.34	—	—	—
Return of capital	0.11	0.10	—	0.13	0.14	0.13
<b>Total Distributions<sup>3</sup></b>	\$ 0.28	\$ 0.56	\$ 0.82	\$ 0.62	\$ 0.63	\$ 0.64
<b>Net Assets, end of period</b>	\$ 9.43	\$ 9.55	\$ 9.60	\$ 10.29	\$ 10.59	\$ 10.57

<sup>1</sup> This information is derived from the Fund's audited annual and unaudited interim financial statements.

<sup>2</sup> Net assets and distributions are based on the actual number of units outstanding at the relevant time. The total increase (decrease) from operations is based on the weighted average number of units outstanding during the period.

<sup>3</sup> Distributions were paid in cash, reinvested in additional units of the Fund, or both.

### Ratios and Supplemental Data - Elite-T6 Class Units

	2020	2019	2018	2017	2016	2015
<b>Total Net Asset Value (000s)<sup>4</sup></b>	\$ 4,444	\$ 4,483	\$ 5,255	\$ 6,854	\$ 4,690	\$ 3,739
<b>Number of Units Outstanding<sup>4</sup></b>	471,359	469,326	547,308	666,057	442,811	353,752
<b>Management Expense Ratio<sup>5</sup></b>	1.38%*	1.38%	1.38%	1.38%	1.38%	1.40%
<b>Management Expense Ratio before waivers or absorptions<sup>6</sup></b>	1.62%*	1.63%	1.63%	1.62%	1.63%	1.66%
<b>Trading Expense Ratio<sup>7</sup></b>	0.02%*	0.03%	0.06%	0.08%	0.04%	0.05%
<b>Portfolio Turnover Rate<sup>8</sup></b>	2.86%	6.35%	9.47%	5.77%	6.41%	1.60%
<b>Net Asset Value per Unit</b>	\$ 9.43	\$ 9.55	\$ 9.60	\$ 10.29	\$ 10.59	\$ 10.57

\* Ratio has been annualized.

<sup>4</sup> This information is presented as at February 29, 2020 and August 31 of the period(s) shown.

<sup>5</sup> Management expense ratio is based on the total expenses of the fund (excluding commissions and other portfolio transaction costs), incurred by or allocated to a class of units for the period shown, expressed as an annualized percentage of the daily average net asset value of that class during the period.

<sup>6</sup> The decision to waive and/or absorb management fees and operating expenses is at the discretion of the Manager. The practice of waiving and/or absorbing management fees and operating expenses may continue indefinitely or may be terminated at any time without notice to unitholders.

<sup>7</sup> The trading expense ratio represents total commissions and other portfolio transaction costs before income taxes expressed as an annualized percentage of the daily average net asset value during the period. Spreads associated with fixed income securities trading are not ascertainable and, for that reason, are not included in the trading expense ratio calculation.

<sup>8</sup> The portfolio turnover rate indicates how actively the portfolio advisor and/or portfolio sub-advisor manages the portfolio investments. A portfolio turnover rate of 100% is equivalent to a fund buying and selling all of the securities in its portfolio once in the course of the period. The higher a portfolio turnover rate in a period, the greater the trading costs payable by a fund in the period, and the greater the chance of an investor receiving taxable capital gains in the year. There is not necessarily a relationship between a high turnover rate and the performance of a fund.

## Renaissance Optimal Income Portfolio

### The Fund's Net Assets per Unit<sup>1</sup> - Elite-T8 Class Units

	2020	2019	2018	2017	2016	2015
<b>Net Assets, beginning of period</b>	\$ 8.15	\$ 8.37	\$ 8.97	\$ 9.43	\$ 9.60	\$ 10.28
<b>Increase (decrease) from operations:</b>						
Total revenue	\$ 0.14	\$ 0.30	\$ 0.34	\$ 0.33	\$ 0.33	\$ 0.34
Total expenses	(0.06)	(0.12)	(0.12)	(0.13)	(0.13)	(0.13)
Realized gains (losses) for the period	0.05	0.05	0.51	0.20	0.17	0.04
Unrealized gains (losses) for the period	—	0.18	(0.63)	(0.08)	0.23	(0.26)
<b>Total increase (decrease) from operations<sup>2</sup></b>	\$ 0.13	\$ 0.41	\$ 0.10	\$ 0.32	\$ 0.60	\$ (0.01)
<b>Distributions:</b>						
From income (excluding dividends)	\$ 0.13	\$ 0.45	\$ 0.51	\$ 0.53	\$ 0.53	\$ 0.57
From dividends	0.03	0.03	0.03	0.03	0.04	0.03
From capital gains	—	0.02	0.15	—	—	—
Return of capital	0.16	0.15	0.03	0.18	0.19	0.19
<b>Total Distributions<sup>3</sup></b>	\$ 0.32	\$ 0.65	\$ 0.72	\$ 0.74	\$ 0.76	\$ 0.79
<b>Net Assets, end of period</b>	\$ 7.96	\$ 8.15	\$ 8.37	\$ 8.97	\$ 9.43	\$ 9.60

<sup>1</sup> This information is derived from the Fund's audited annual and unaudited interim financial statements.

<sup>2</sup> Net assets and distributions are based on the actual number of units outstanding at the relevant time. The total increase (decrease) from operations is based on the weighted average number of units outstanding during the period.

<sup>3</sup> Distributions were paid in cash, reinvested in additional units of the Fund, or both.

### Ratios and Supplemental Data - Elite-T8 Class Units

	2020	2019	2018	2017	2016	2015
<b>Total Net Asset Value (000s)<sup>4</sup></b>	\$ 4,411	\$ 4,532	\$ 5,015	\$ 5,867	\$ 5,277	\$ 4,213
<b>Number of Units Outstanding<sup>4</sup></b>	554,002	555,997	599,144	653,685	559,819	438,766
<b>Management Expense Ratio<sup>5</sup></b>	1.43%*	1.43%	1.43%	1.40%	1.38%	1.35%
<b>Management Expense Ratio before waivers or absorptions<sup>6</sup></b>	1.67%*	1.68%	1.68%	1.65%	1.63%	1.71%
<b>Trading Expense Ratio<sup>7</sup></b>	0.02%*	0.03%	0.06%	0.08%	0.04%	0.05%
<b>Portfolio Turnover Rate<sup>8</sup></b>	2.86%	6.35%	9.47%	5.77%	6.41%	1.60%
<b>Net Asset Value per Unit</b>	\$ 7.96	\$ 8.15	\$ 8.37	\$ 8.97	\$ 9.43	\$ 9.60

\* Ratio has been annualized.

<sup>4</sup> This information is presented as at February 29, 2020 and August 31 of the period(s) shown.

<sup>5</sup> Management expense ratio is based on the total expenses of the fund (excluding commissions and other portfolio transaction costs), incurred by or allocated to a class of units for the period shown, expressed as an annualized percentage of the daily average net asset value of that class during the period.

<sup>6</sup> The decision to waive and/or absorb management fees and operating expenses is at the discretion of the Manager. The practice of waiving and/or absorbing management fees and operating expenses may continue indefinitely or may be terminated at any time without notice to unitholders.

<sup>7</sup> The trading expense ratio represents total commissions and other portfolio transaction costs before income taxes expressed as an annualized percentage of the daily average net asset value during the period. Spreads associated with fixed income securities trading are not ascertainable and, for that reason, are not included in the trading expense ratio calculation.

<sup>8</sup> The portfolio turnover rate indicates how actively the portfolio advisor and/or portfolio sub-advisor manages the portfolio investments. A portfolio turnover rate of 100% is equivalent to a fund buying and selling all of the securities in its portfolio once in the course of the period. The higher a portfolio turnover rate in a period, the greater the trading costs payable by a fund in the period, and the greater the chance of an investor receiving taxable capital gains in the year. There is not necessarily a relationship between a high turnover rate and the performance of a fund.

## Renaissance Optimal Income Portfolio

### The Fund's Net Assets per Unit<sup>1</sup> - Class F Units

	2020	2019	2018	2017	2016	2015
<b>Net Assets, beginning of period</b>	\$ 10.70	\$ 10.48	\$ 10.98	\$ 11.01	\$ 10.71	\$ 10.97
<b>Increase (decrease) from operations:</b>						
Total revenue	\$ 0.18	\$ 0.38	\$ 0.42	\$ 0.40	\$ 0.38	\$ 0.38
Total expenses	(0.04)	(0.08)	(0.09)	(0.10)	(0.10)	(0.10)
Realized gains (losses) for the period	0.06	0.06	0.64	0.21	0.17	0.06
Unrealized gains (losses) for the period	—	0.22	(0.78)	(0.13)	0.35	(0.28)
<b>Total increase (decrease) from operations<sup>2</sup></b>	\$ 0.20	\$ 0.58	\$ 0.19	\$ 0.38	\$ 0.80	\$ 0.06
<b>Distributions:</b>						
From income (excluding dividends)	\$ 0.09	\$ 0.31	\$ 0.35	\$ 0.34	\$ 0.32	\$ 0.34
From dividends	0.07	0.05	0.04	0.04	0.05	0.04
From capital gains	—	0.03	0.31	—	—	—
Return of capital	0.04	0.02	—	0.05	0.05	0.04
<b>Total Distributions<sup>3</sup></b>	\$ 0.20	\$ 0.41	\$ 0.70	\$ 0.43	\$ 0.42	\$ 0.42
<b>Net Assets, end of period</b>	\$ 10.69	\$ 10.70	\$ 10.48	\$ 10.98	\$ 11.01	\$ 10.71

<sup>1</sup> This information is derived from the Fund's audited annual and unaudited interim financial statements.

<sup>2</sup> Net assets and distributions are based on the actual number of units outstanding at the relevant time. The total increase (decrease) from operations is based on the weighted average number of units outstanding during the period.

<sup>3</sup> Distributions were paid in cash, reinvested in additional units of the Fund, or both.

### Ratios and Supplemental Data - Class F Units

	2020	2019	2018	2017	2016	2015
<b>Total Net Asset Value (000s)<sup>4</sup></b>	\$ 363,524	\$ 359,071	\$ 391,445	\$ 419,782	\$ 273,149	\$ 170,159
<b>Number of Units Outstanding<sup>4</sup></b>	34,009,952	33,573,376	37,355,503	38,240,919	24,801,067	15,881,797
<b>Management Expense Ratio<sup>5</sup></b>	0.85%*	0.85%	0.85%	0.91%	0.92%	0.91%
<b>Management Expense Ratio before waivers or absorptions<sup>6</sup></b>	0.96%*	0.98%	0.97%	0.97%	1.03%	0.99%
<b>Trading Expense Ratio<sup>7</sup></b>	0.02%*	0.03%	0.06%	0.08%	0.04%	0.05%
<b>Portfolio Turnover Rate<sup>8</sup></b>	2.86%	6.35%	9.47%	5.77%	6.41%	1.60%
<b>Net Asset Value per Unit</b>	\$ 10.69	\$ 10.70	\$ 10.48	\$ 10.98	\$ 11.01	\$ 10.71

\* Ratio has been annualized.

<sup>4</sup> This information is presented as at February 29, 2020 and August 31 of the period(s) shown.

<sup>5</sup> Management expense ratio is based on the total expenses of the fund (excluding commissions and other portfolio transaction costs), incurred by or allocated to a class of units for the period shown, expressed as an annualized percentage of the daily average net asset value of that class during the period.

<sup>6</sup> The decision to waive and/or absorb management fees and operating expenses is at the discretion of the Manager. The practice of waiving and/or absorbing management fees and operating expenses may continue indefinitely or may be terminated at any time without notice to unitholders.

<sup>7</sup> The trading expense ratio represents total commissions and other portfolio transaction costs before income taxes expressed as an annualized percentage of the daily average net asset value during the period. Spreads associated with fixed income securities trading are not ascertainable and, for that reason, are not included in the trading expense ratio calculation.

<sup>8</sup> The portfolio turnover rate indicates how actively the portfolio advisor and/or portfolio sub-advisor manages the portfolio investments. A portfolio turnover rate of 100% is equivalent to a fund buying and selling all of the securities in its portfolio once in the course of the period. The higher a portfolio turnover rate in a period, the greater the trading costs payable by a fund in the period, and the greater the chance of an investor receiving taxable capital gains in the year. There is not necessarily a relationship between a high turnover rate and the performance of a fund.

## Renaissance Optimal Income Portfolio

### The Fund's Net Assets per Unit<sup>1</sup> - Class FT6 Units

	2020	2019	2018 <sup>a</sup>
<b>Net Assets, beginning of period</b>	\$ 9.66	\$ 9.66	\$ 10.00 <sup>b</sup>
<b>Increase (decrease) from operations:</b>			
Total revenue	\$ 0.16	\$ 0.35	\$ 0.38
Total expenses	(0.04)	(0.08)	(0.08)
Realized gains (losses) for the period	0.06	0.06	0.44
Unrealized gains (losses) for the period	—	0.22	(0.60)
<b>Total increase (decrease) from operations<sup>2</sup></b>	<b>\$ 0.18</b>	<b>\$ 0.55</b>	<b>\$ 0.14</b>
<b>Distributions:</b>			
From income (excluding dividends)	\$ 0.12	\$ 0.39	\$ 0.49
From dividends	0.06	0.05	0.04
From capital gains	—	0.03	0.08
Return of capital	0.10	0.09	—
<b>Total Distributions<sup>3</sup></b>	<b>\$ 0.28</b>	<b>\$ 0.56</b>	<b>\$ 0.61</b>
<b>Net Assets, end of period</b>	<b>\$ 9.57</b>	<b>\$ 9.66</b>	<b>\$ 9.66</b>

<sup>a</sup> Information presented is for the period from September 19, 2017 to August 31, 2018.

<sup>b</sup> Initial offering price.

<sup>1</sup> This information is derived from the Fund's audited annual and unaudited interim financial statements.

<sup>2</sup> Net assets and distributions are based on the actual number of units outstanding at the relevant time. The total increase (decrease) from operations is based on the weighted average number of units outstanding during the period.

<sup>3</sup> Distributions were paid in cash, reinvested in additional units of the Fund, or both.

### Ratios and Supplemental Data - Class FT6 Units

	2020	2019	2018 <sup>a</sup>
<b>Total Net Asset Value (000s)<sup>4</sup></b>	<b>\$ 5,191</b>	<b>\$ 5,075</b>	<b>\$ 4,143</b>
<b>Number of Units Outstanding<sup>4</sup></b>	<b>542,647</b>	<b>525,121</b>	<b>429,020</b>
<b>Management Expense Ratio<sup>5</sup></b>	<b>0.84% *</b>	<b>0.84%</b>	<b>0.84% *</b>
<b>Management Expense Ratio before waivers or absorptions<sup>6</sup></b>	<b>0.94% *</b>	<b>0.95%</b>	<b>0.94% *</b>
<b>Trading Expense Ratio<sup>7</sup></b>	<b>0.02% *</b>	<b>0.03%</b>	<b>0.06%</b>
<b>Portfolio Turnover Rate<sup>8</sup></b>	<b>2.86%</b>	<b>6.35%</b>	<b>9.47%</b>
<b>Net Asset Value per Unit</b>	<b>\$ 9.57</b>	<b>\$ 9.66</b>	<b>\$ 9.66</b>

<sup>a</sup> Information presented is for the period from September 19, 2017 to August 31, 2018.

\* Ratio has been annualized.

<sup>4</sup> This information is presented as at February 29, 2020 and August 31 of the period(s) shown.

<sup>5</sup> Management expense ratio is based on the total expenses of the fund (excluding commissions and other portfolio transaction costs), incurred by or allocated to a class of units for the period shown, expressed as an annualized percentage of the daily average net asset value of that class during the period.

<sup>6</sup> The decision to waive and/or absorb management fees and operating expenses is at the discretion of the Manager. The practice of waiving and/or absorbing management fees and operating expenses may continue indefinitely or may be terminated at any time without notice to unitholders.

<sup>7</sup> The trading expense ratio represents total commissions and other portfolio transaction costs before income taxes expressed as an annualized percentage of the daily average net asset value during the period. Spreads associated with fixed income securities trading are not ascertainable and, for that reason, are not included in the trading expense ratio calculation.

<sup>8</sup> The portfolio turnover rate indicates how actively the portfolio advisor and/or portfolio sub-advisor manages the portfolio investments. A portfolio turnover rate of 100% is equivalent to a fund buying and selling all of the securities in its portfolio once in the course of the period. The higher a portfolio turnover rate in a period, the greater the trading costs payable by a fund in the period, and the greater the chance of an investor receiving taxable capital gains in the year. There is not necessarily a relationship between a high turnover rate and the performance of a fund.

## Renaissance Optimal Income Portfolio

### The Fund's Net Assets per Unit<sup>1</sup> - Class O Units

	2020	2019	2018	2017	2016	2015
<b>Net Assets, beginning of period</b>	\$ 12.75	\$ 12.43	\$ 13.11	\$ 13.04	\$ 12.57	\$ 12.75
<b>Increase (decrease) from operations:</b>						
Total revenue	\$ 0.21	\$ 0.45	\$ 0.50	\$ 0.47	\$ 0.44	\$ 0.44
Total expenses	—	—	—	—	—	—
Realized gains (losses) for the period	0.07	0.08	0.76	0.27	0.22	0.08
Unrealized gains (losses) for the period	0.01	0.29	(0.93)	(0.15)	0.27	(0.20)
<b>Total increase (decrease) from operations<sup>2</sup></b>	\$ 0.29	\$ 0.82	\$ 0.33	\$ 0.59	\$ 0.93	\$ 0.32
<b>Distributions:</b>						
From income (excluding dividends)	\$ 0.11	\$ 0.37	\$ 0.43	\$ 0.41	\$ 0.39	\$ 0.42
From dividends	0.12	0.09	0.08	0.08	0.09	0.06
From capital gains	—	0.07	0.52	—	—	—
Return of capital	0.01	—	—	0.02	0.02	0.01
<b>Total Distributions<sup>3</sup></b>	\$ 0.24	\$ 0.53	\$ 1.03	\$ 0.51	\$ 0.50	\$ 0.49
<b>Net Assets, end of period</b>	\$ 12.80	\$ 12.75	\$ 12.43	\$ 13.11	\$ 13.04	\$ 12.57

<sup>1</sup> This information is derived from the Fund's audited annual and unaudited interim financial statements.

<sup>2</sup> Net assets and distributions are based on the actual number of units outstanding at the relevant time. The total increase (decrease) from operations is based on the weighted average number of units outstanding during the period.

<sup>3</sup> Distributions were paid in cash, reinvested in additional units of the Fund, or both.

### Ratios and Supplemental Data - Class O Units

	2020	2019	2018	2017	2016	2015
<b>Total Net Asset Value (000s)<sup>4</sup></b>	\$ 7,319	\$ 7,682	\$ 8,539	\$ 10,161	\$ 11,626	\$ 12,622
<b>Number of Units Outstanding<sup>4</sup></b>	572,014	602,678	686,822	774,907	891,580	1,003,883
<b>Management Expense Ratio<sup>5</sup></b>	0.00%*	0.00%	0.00%	0.00%	0.00%	0.00%
<b>Management Expense Ratio before waivers or absorptions<sup>6</sup></b>	0.04%*	0.05%	0.05%	0.05%	0.05%	0.05%
<b>Trading Expense Ratio<sup>7</sup></b>	0.02%*	0.03%	0.06%	0.08%	0.04%	0.05%
<b>Portfolio Turnover Rate<sup>8</sup></b>	2.86%	6.35%	9.47%	5.77%	6.41%	1.60%
<b>Net Asset Value per Unit</b>	\$ 12.80	\$ 12.75	\$ 12.43	\$ 13.11	\$ 13.04	\$ 12.57

\* Ratio has been annualized.

<sup>4</sup> This information is presented as at February 29, 2020 and August 31 of the period(s) shown.

<sup>5</sup> Management expense ratio is based on the total expenses of the fund (excluding commissions and other portfolio transaction costs), incurred by or allocated to a class of units for the period shown, expressed as an annualized percentage of the daily average net asset value of that class during the period.

<sup>6</sup> The decision to waive and/or absorb management fees and operating expenses is at the discretion of the Manager. The practice of waiving and/or absorbing management fees and operating expenses may continue indefinitely or may be terminated at any time without notice to unitholders.

<sup>7</sup> The trading expense ratio represents total commissions and other portfolio transaction costs before income taxes expressed as an annualized percentage of the daily average net asset value during the period. Spreads associated with fixed income securities trading are not ascertainable and, for that reason, are not included in the trading expense ratio calculation.

<sup>8</sup> The portfolio turnover rate indicates how actively the portfolio advisor and/or portfolio sub-advisor manages the portfolio investments. A portfolio turnover rate of 100% is equivalent to a fund buying and selling all of the securities in its portfolio once in the course of the period. The higher a portfolio turnover rate in a period, the greater the trading costs payable by a fund in the period, and the greater the chance of an investor receiving taxable capital gains in the year. There is not necessarily a relationship between a high turnover rate and the performance of a fund.

## Renaissance Optimal Income Portfolio

### Management Fees

The Fund pays CAMI an annual management fee to cover the costs of managing the Fund. Management fees are based on the Fund's net asset value and are calculated daily and paid monthly. Management fees are paid to CAMI in consideration for providing, or arranging for the provision of, management, distribution, and portfolio advisory services. Advertising and promotional expenses, office overhead expenses related to the Manager's activities, and trailing commissions are paid by CAMI out of the management fees received from the Fund. The Fund is required to pay applicable taxes on the management fees paid to CAMI. Refer to the simplified prospectus for the annual management fee rate for each class of units.

For Class O units, the management fee is negotiated with and paid by, or as directed by, unitholders or dealers and discretionary managers on behalf of unitholders. Such Class O management fee will not exceed the Class F unit management fee rate.

The following table shows a breakdown of the services received in consideration of the management fees, as a percentage of the management fees collected from the Fund for the period ended February 29, 2020. These amounts do not include waived fees or absorbed expenses.

	Class A Units	Class T6 Units	Class T8 Units	Select Class Units	Select-T6 Class Units	Select-T8 Class Units
Sales and trailing commissions paid to dealers	52.74%	51.11%	53.40%	58.89%	56.72%	58.07%
General administration, investment advice, and profit	47.26%	48.89%	46.60%	41.11%	43.28%	41.93%

	Elite Class Units	Elite-T6 Class Units	Elite-T8 Class Units	Class F Units	Class FT6 Units
Sales and trailing commissions paid to dealers	55.12%	53.58%	53.00%	0.00%	0.00%
General administration, investment advice, and profit	44.88%	46.42%	47.00%	100.00%	100.00%

### Past Performance

The performance data provided assumes reinvestment of distributions only and does not take into account sales, redemption, distribution, or other optional charges payable by any unitholder that would have reduced returns. Past performance does not necessarily indicate how a fund will perform in the future.

The Fund's returns are after the deduction of fees and expenses, and the difference in returns between classes of units is primarily due to differences in the management expense ratio. See *Financial Highlights* section for the management expense ratio.

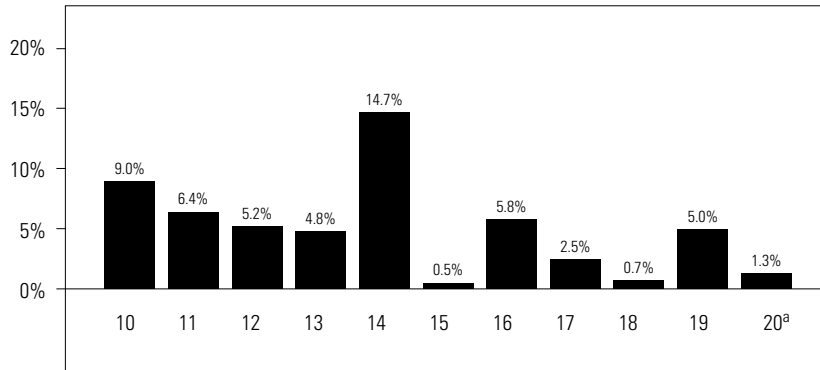
### Year-by-Year Returns

These bar charts show the annual performance of each class of units of the Fund for each of the periods shown, and illustrate how the performance has changed from period to period. These bar charts show, in percentage terms, how an investment made on September 1 would have increased or decreased by August 31, unless otherwise indicated.



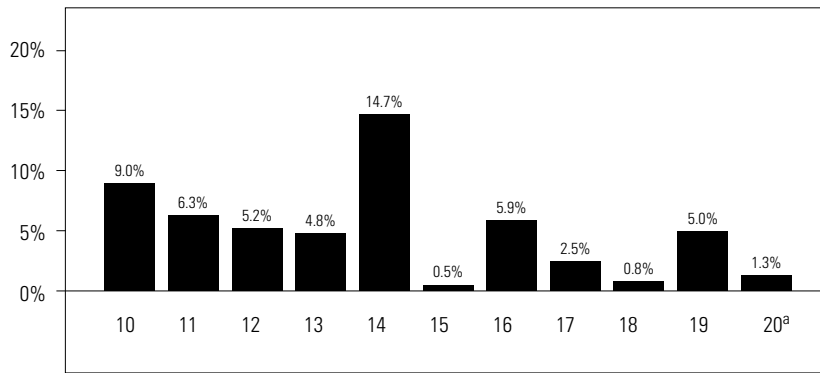
## Renaissance Optimal Income Portfolio

### Class A Units



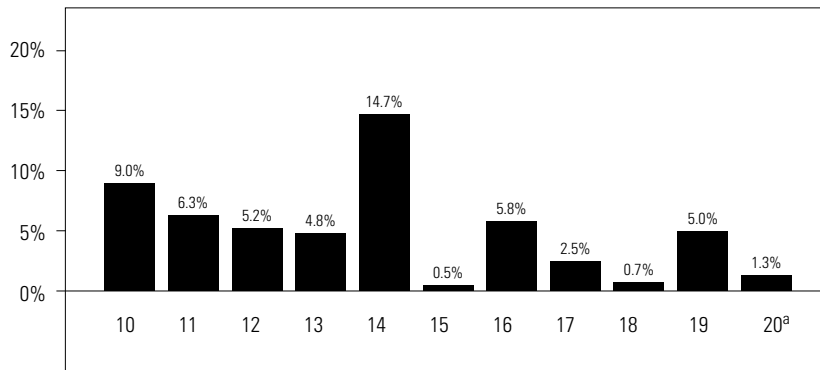
<sup>a</sup> 2020 return is for the period from September 1, 2019 to February 29, 2020.

### Class T6 Units



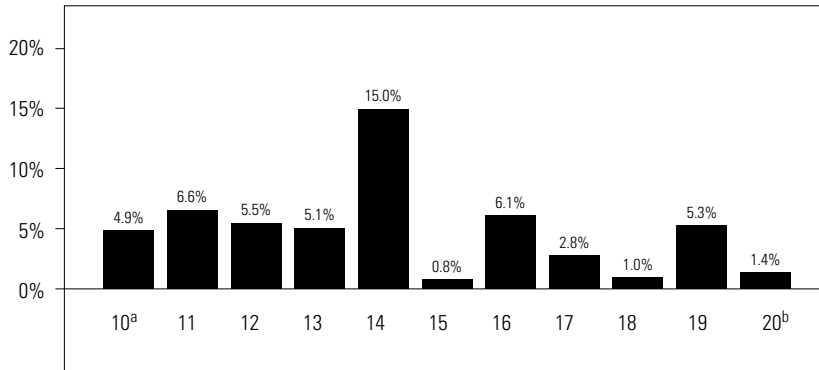
<sup>a</sup> 2020 return is for the period from September 1, 2019 to February 29, 2020.

### Class T8 Units



<sup>a</sup> 2020 return is for the period from September 1, 2019 to February 29, 2020.

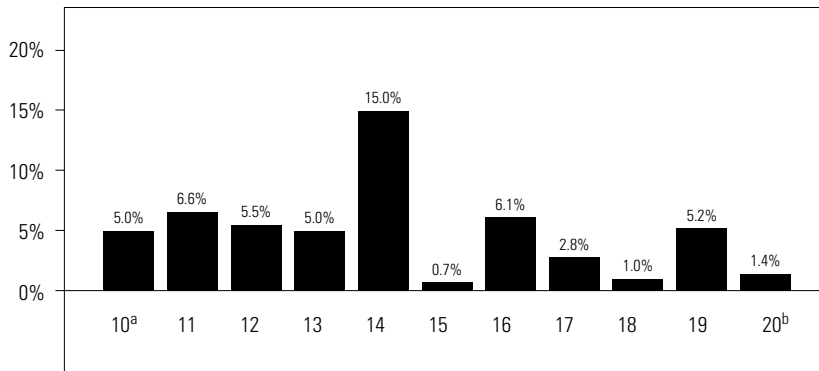
Select Class Units



<sup>a</sup> 2010 return is for the period from January 5, 2010 to August 31, 2010.

<sup>b</sup> 2020 return is for the period from September 1, 2019 to February 29, 2020.

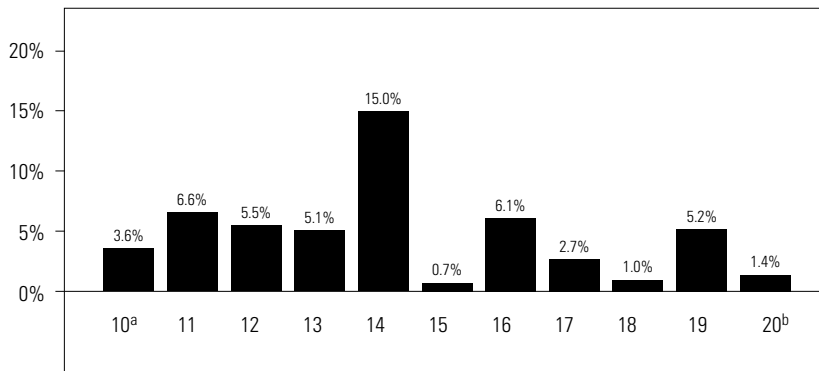
Select-T6 Class Units



<sup>a</sup> 2010 return is for the period from January 26, 2010 to August 31, 2010.

<sup>b</sup> 2020 return is for the period from September 1, 2019 to February 29, 2020.

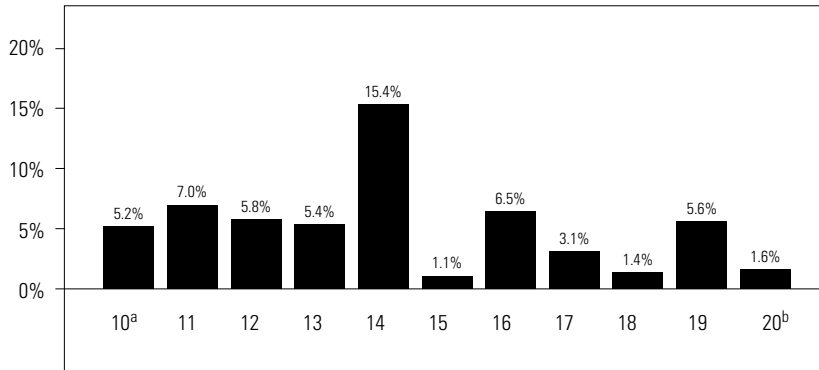
Select-T8 Class Units



<sup>a</sup> 2010 return is for the period from April 12, 2010 to August 31, 2010.

<sup>b</sup> 2020 return is for the period from September 1, 2019 to February 29, 2020.

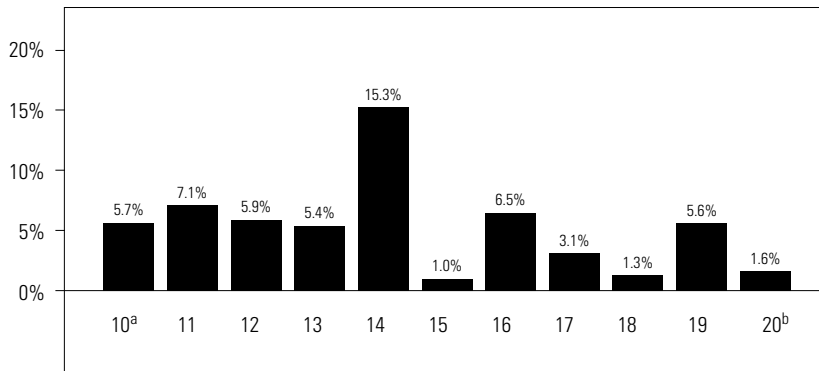
Elite Class Units



<sup>a</sup> 2010 return is for the period from January 5, 2010 to August 31, 2010.

<sup>b</sup> 2020 return is for the period from September 1, 2019 to February 29, 2020.

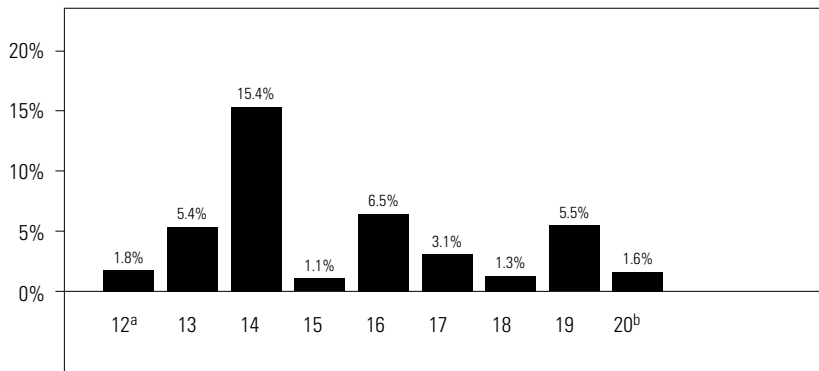
Elite-T6 Class Units



<sup>a</sup> 2010 return is for the period from February 23, 2010 to August 31, 2010.

<sup>b</sup> 2020 return is for the period from September 1, 2019 to February 29, 2020.

Elite-T8 Class Units

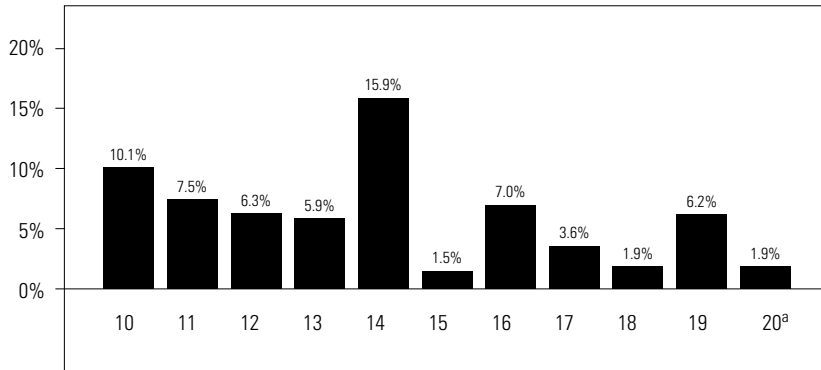


<sup>a</sup> 2012 return is for the period from May 11, 2012 to August 31, 2012.

<sup>b</sup> 2020 return is for the period from September 1, 2019 to February 29, 2020.

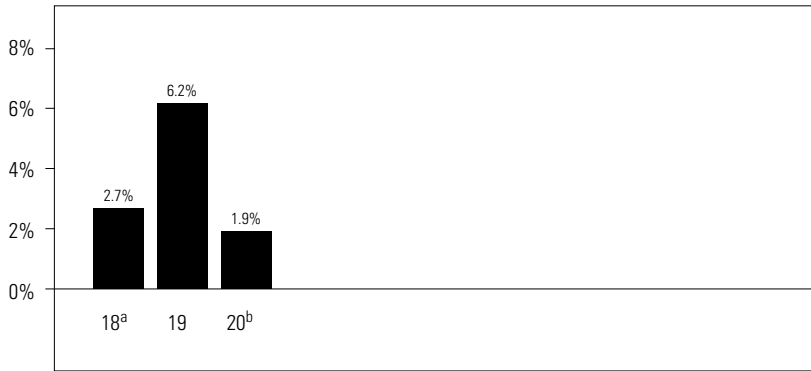
Renaissance Optimal Income Portfolio

Class F Units



<sup>a</sup> 2020 return is for the period from September 1, 2019 to February 29, 2020.

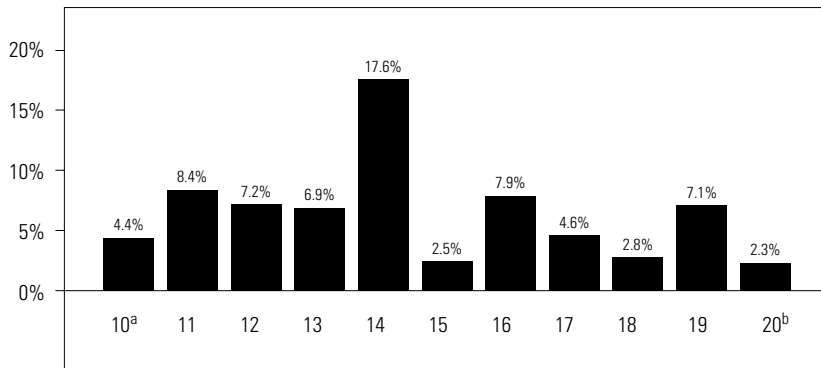
Class FT6 Units



<sup>a</sup> 2018 return is for the period from September 19, 2017 to August 31, 2018.

<sup>b</sup> 2020 return is for the period from September 1, 2019 to February 29, 2020.

Class O Units



<sup>a</sup> 2010 return is for the period from June 21, 2010 to August 31, 2010.

<sup>b</sup> 2020 return is for the period from September 1, 2019 to February 29, 2020.

## Renaissance Optimal Income Portfolio

---

### Summary of Investment Portfolio (as at February 29, 2020)

---

This Fund invests primarily in units of its Underlying Funds. You can find the prospectus and additional information about the Underlying Funds by visiting [www.sedar.com](http://www.sedar.com).

The summary of investment portfolio may change due to ongoing portfolio transactions of the investment fund. A quarterly update is available by visiting [www.renaissanceinvestments.ca](http://www.renaissanceinvestments.ca). The Top Positions table shows a fund's 25 largest positions. For funds with fewer than 25 positions in total, all positions are shown.

<i>Portfolio Breakdown</i>	<i>% of Net Asset Value</i>	<i>Top Positions</i>	<i>% of Net Asset Value</i>
Canadian Bond Mutual Funds	34.8	Renaissance Canadian Bond Fund, Class 'O'	29.8
Canadian Equity Mutual Funds	25.0	Renaissance Canadian Dividend Fund, Class 'O'	25.0
International Bond Mutual Funds	15.3	Renaissance Global Infrastructure Fund, Class 'O'	14.4
International Equity Mutual Funds	14.4	Renaissance Global Bond Fund, Class 'O'	10.1
Global Fixed Income Mutual Funds	10.1	Renaissance High-Yield Bond Fund, Class 'O'	10.1
Cash	0.4	Renaissance Floating Rate Income Fund, Class 'O'	5.2
		Renaissance Real Return Bond Fund, Class 'O'	5.0
		Cash	0.4

**A note on forward-looking statements**

The management report of fund performance may contain forward-looking statements. Forward-looking statements include statements that are predictive in nature, that depend upon or refer to future events or conditions, or that include words such as “expects”, “anticipates”, “intends”, “plans”, “believes”, “estimates”, or other similar wording. In addition, any statements that may be made concerning future performance, strategies, or prospects and possible future actions taken by the fund, are also forward-looking statements. Forward-looking statements are not guarantees of future performance. These statements involve known and unknown risks, uncertainties, and other factors that may cause the actual results and achievements of the fund to differ materially from those expressed or implied by such statements. Such factors include, but are not limited to: general economic, market, and business conditions; fluctuations in securities prices, interest rates, and foreign currency exchange rates; changes in government regulations; and catastrophic events.

The above list of important factors that may affect future results is not exhaustive. Before making any investment decisions, we encourage you to consider these and other factors carefully. CIBC Asset Management Inc. does not undertake, and specifically disclaims, any obligation to update or revise any forward-looking statements, whether as a result of new information, future developments, or otherwise prior to the release of the next management report of fund performance.

---



**Renaissance Investments**

1500 Robert-Bourassa Boulevard, Suite 800  
Montreal, Quebec  
H3A 3S6  
1-888-888-FUND (3863)

**Website**

[www.renaissanceinvestments.ca](http://www.renaissanceinvestments.ca)

CIBC Asset Management Inc., the manager and trustee of the Renaissance Investments family of funds, is a wholly-owned subsidiary of Canadian Imperial Bank of Commerce. Please read the Renaissance Investments family of funds, Axiom Portfolios and Renaissance Private Pools simplified prospectus before investing. To obtain a copy of the simplified prospectus, call 1-888-888-FUND (3863), email us at [info@renaissanceinvestments.ca](mailto:info@renaissanceinvestments.ca), or ask your advisor.

Renaissance Investments® is offered by and is a registered trademark of CIBC Asset Management Inc.